



ANALYSIS TOOLS MANUAL

VOL 1

OVERVIEW & INSTALLATION

BIOGRAPHICAL ANALYSES

CLINIC VISIT ANALYSES

UNKNOWN ANALYSES

UNINSTALLING THE ANALYSIS TOOLS

VOL 2

ANNUAL REVIEW ANALYSES

*Maternal and Child Health Sciences,
University of Dundee
Ninewells Hospital and Medical School
Dundee DD1 9SY*

CONTENTS

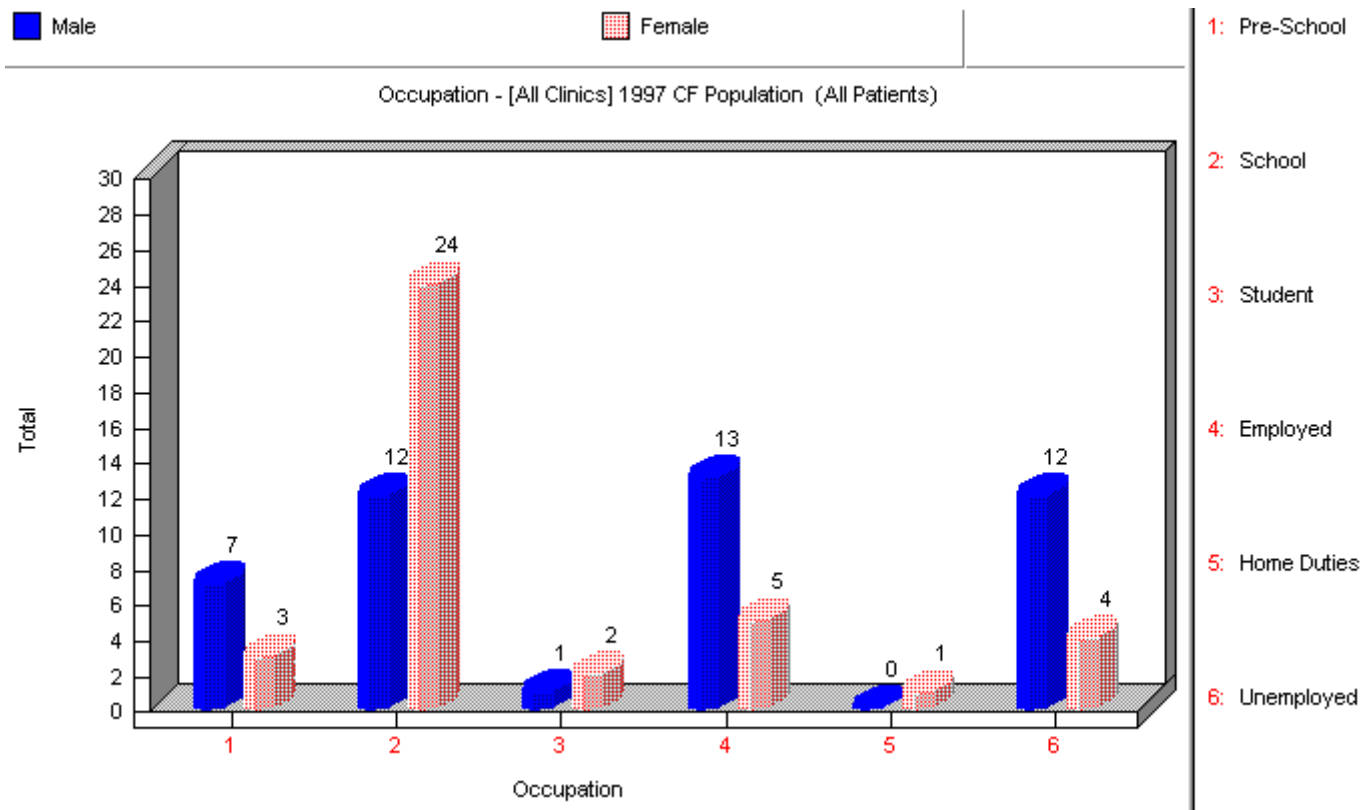
CLINIC VISIT ANALYSES AND UNKNOWNNS – VOLUME 1

Overview and Installation:	3
Biographical Analyses:	
1. Age	14
2. Age at Diagnosis	15
3. Presenting Features at Diagnosis	16
4. Genotype	18
Clinic Visit Analyses:	
5. Body Mass Index	20
6. Height	23
7. Weight	26
8. FEV1	29
9. FVC	31
10. Exercise Tolerance	33
11. Bacterial Lung Infection	34
12. Reason for Hospital Admission	36
13. DNase at any time	38
14. DNase at every visit	39
Unknowns Analyses:	
15. Unknowns Analysis Overview	40
16. Unknowns – No clinic visits	42
17. Unknowns – 1 to 3 clinic visits	43
18. Unknowns – No annual reviews	44
19. Unknowns – No sputum done	45
20. Unknowns – General unknowns	46
Uninstalling the Analysis Tools:	48

ANNUAL REVIEW ANALYSIS – VOLUME 2

1. Occupation	51
2. Nebulised Antibiotics	52
3. Organisms Cultured	54
4. Supplemental Feeding	56
5. Days off School	58
6. Days in Hospital	60
7. Number of Clinic Visits	62
8. Shwachman General Activity	64
9. Shwachman Physical Examination	66
10. Shwachman Nutrition	68
11. Shwachman Chest Xray	70
12. Shwachman Total Score	72
13. Marital Status	74
14. Treatment Compliance	76
15. Complications – all	78
16. Complications – chest	81
17. Complications – gut	83
18. Complications – various	85
19. Northern Score	87
20. Oral Antibiotics	89
21. Glucose Tolerance	91

Occupation



Occupation Graph

This graph shows the patients divided into occupation categories. All patients who have annual review records in the year being analysed are classified by their occupation category.

Splits are available for:

- Sex
- Age Groups – in 5 year age bands (age as at 31st December in the year being analysed)
- Child vs Adult – Under 16s vs 16 years and over (age as at 31st December in the year being analysed)

Data Specification: Data Fields Used

FieldName	Table	Field ID	Criteria
EmploymentOrSchoolStatusAtVisit	PublicCysticFibrosisAnnualReview	[152-159]	{"Pre-school", "At School", "Higher Education", "Unemployed", "Full-Time", "Part-Time", "Homemaker", "Unknown" }
YearOfVisit	PublicCysticFibrosisAnnualReview	[9]	Parameter

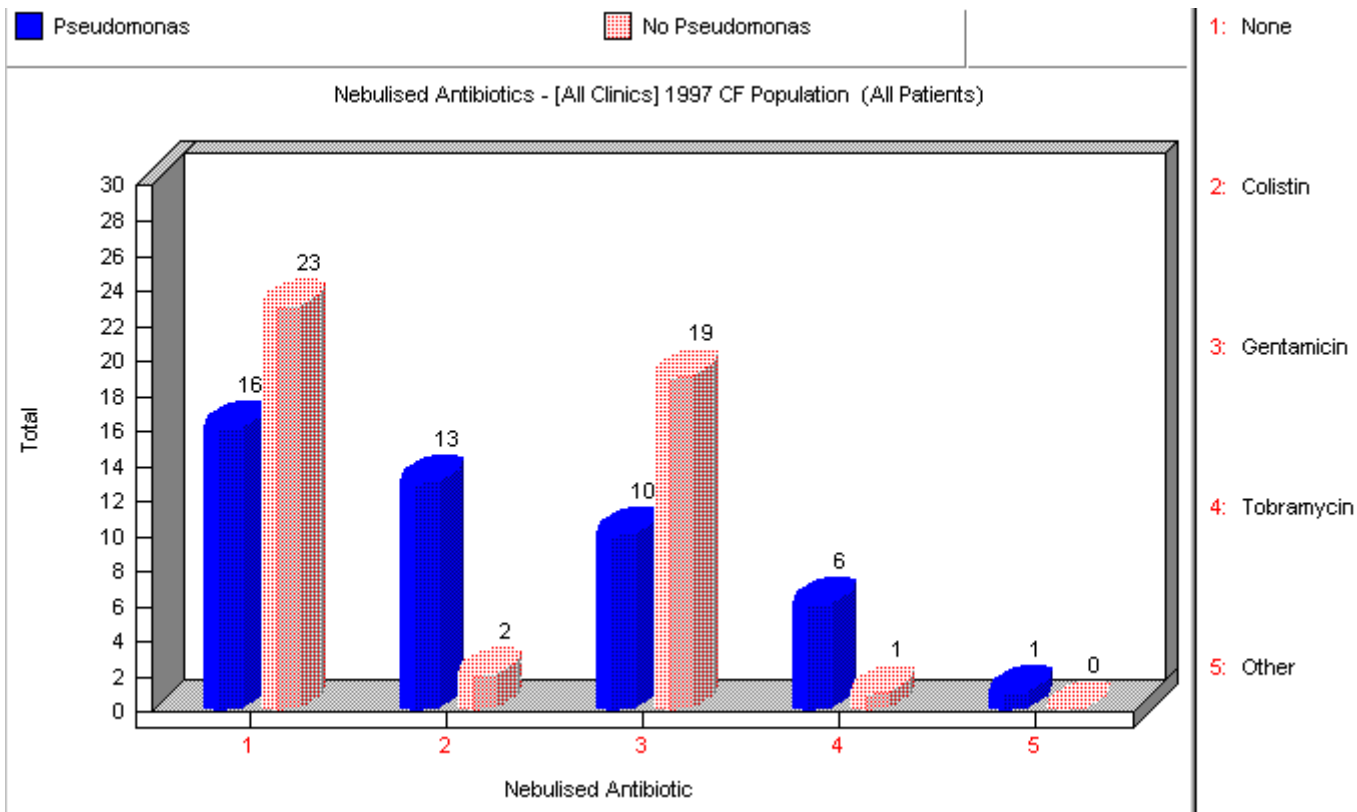
For Sex Split

SexAtBirth	PublicPatientBiography	[9/10/11]
------------	------------------------	-----------

For Age Groups / Child vs Adult Splits

YearOfBirth	PublicPatientBiography	[8]
MonthOfBirth	PublicPatientBiography	[7]

Nebulised Antibiotics



Nebulised Antibiotics

This graph shows the graphs for the nebulised antibiotics that patients are on. Patients are selected if they have attended for Annual Review in the year being analysed.

Splits are available for:

- Sex
- Chronic Pseudomonas infection – If Chronic Pseudomonas infection was checked as a ‘Complication in the last period’ on the Annual Review form
- Age Groups – in 5 year age bands (age as at 31st December in the year being analysed)
- Child vs Adult – Under 16s vs 16 years and over (age as at 31st December in the year being analysed)
- Chronic Staphylococcus infection – If Chronic Staphylococcus aureus infection was checked as a ‘Complication in the last period’ on the Annual Review form
- Cepacia infection – if Burkholderia (Cepaciae) was cultured in the last period in either sputum culture or cough swab

To view a list of items entered in ‘Other’, right click the mouse on the ‘Other’ bar. The list displayed may be copied to the clipboard if required.

Data Specification

Data Fields Used

FieldName	Table	Field ID	Criteria
-----------	-------	----------	----------

PatientIdentifier	PublicCysticFibrosisAnnualReview	[1]	-
ClinicCode	PublicCysticFibrosisAnnualReview	[2]	Parameter
YearOfVisit	PublicCysticFibrosisAnnualReview	[6]	Parameter
MonthOfVisit	PublicCysticFibrosisAnnualReview	[5]	Numeric
DayOfVisit	PublicCysticFibrosisAnnualReview	[4]	Numeric
ReceivedNoNebulisedAntibioticsInLastPeriod	PublicCysticFibrosisAnnualReview	[37]	=True
ReceivedNebulisedAntibioticColistinInLastPeriod	PublicCysticFibrosisAnnualReview	[38]	=True
ReceivedNebulisedAntibioticGentamicinInLastPeriod	PublicCysticFibrosisAnnualReview	[39]	=True
ReceivedNebulisedAntibioticTobramycinInLastPeriod	PublicCysticFibrosisAnnualReview	[40]	=True
ReceivedOtherNebulisedAntibiotic	PublicCysticFibrosisAnnualReview	[41]	=True

For Sex Split

SexAtBirth	PublicPatientBiography	[9/10/11]
------------	------------------------	-----------

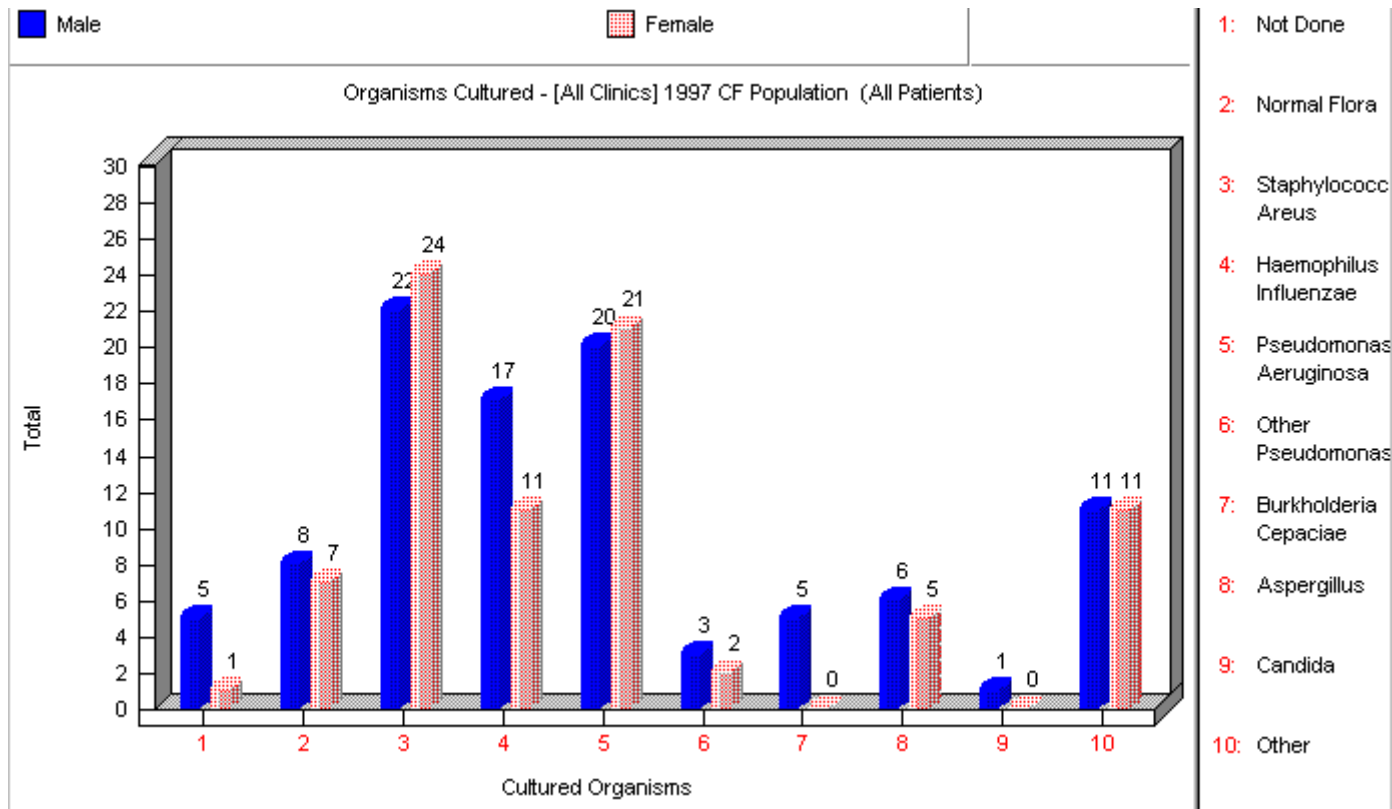
For Chronic Pseudomonas infection/ Chronic Staphylococcus infection/ Cepacia infection Splits

ComplicationInTheLastPeriodofChronicPseudomonasInfection	PublicCysticFibrosisAnnualReview	[13]	=True
ComplicationInTheLastPeriodofChronicStaphAureusInfection	PublicCysticFibrosisAnnualReview	[14]	=True
BacteriologyInLastPeriodFoundBurkholderiaInSputumCulture	PublicCysticFibrosisAnnualReview	[75]	=True
BacteriologyInLastPeriodFoundBurkholderiaInCoughSwab	PublicCysticFibrosisAnnualReview	[76]	=True

For Age Groups / Child vs Adult Splits

YearOfBirth	PublicPatientBiography	[8]
MonthOfBirth	PublicPatientBiography	[7]

Organisms Cultured



Organisms Cultured

This graph shows which organisms are being cultured from patients. Organisms detected in either sputum or cough swab cultures are included in the graph under the relevant category. Patients are selected if they have attended for Annual Review in the year being analysed.

Splits are available for:

- Sex
- Age Groups – in 5 year age bands (age as at 31st December in the year being analysed)
- Child vs Adult – Under 16s vs 16 years and over (age as at 31st December in the year being analysed)

To view a list of items entered in 'Other', right click the mouse on the 'Other' bar. The list displayed may be copied to the clipboard if required.

Data Specification : Data Fields Used

FieldName	Table	Field ID	Criteria
PatientIdentifier	PublicCysticFibrosisAnnualReview	[1]	-
ClinicCode	PublicCysticFibrosisAnnualReview	[2]	Parameter
YearOfVisit	PublicCysticFibrosisAnnualReview	[6]	Parameter
MonthOfVisit	PublicCysticFibrosisAnnualReview	[5]	Numeric
DayOfVisit	PublicCysticFibrosisAnnualReview	[4]	Numeric
NoBacteriologyCulturesWerePerformedInLastPeriod	PublicCysticFibrosisAnnualReview	[64]	=True cat = None
BacteriologyInLastPeriodFoundNormalFloraInSputumCulture	PublicCysticFibrosisAnnualReview	[65]	=True cat = Normal flora
BacteriologyInLastPeriodFoundNormalFloraInCoughSwabCulture	PublicCysticFibrosisAnnualReview	[66]	=True cat = Normal flora
BacteriologyInLastPeriodFoundStaphylococcusAureusInSputumCulture	PublicCysticFibrosisAnnualReview	[67]	=True cat = StaphAureus

BILPFSAC - StaphAureus in cough swab	PublicCysticFibrosisAnnualReview	[68]	=True cat = StaphAureus
BacteriologyInLastPeriodFoundHaemophilusInfluenzaeInSputumCulture	PublicCysticFibrosisAnnualReview	[69]	=True cat = HaemInf
BILPFHIC - HaemInf in cough swab	PublicCysticFibrosisAnnualReview	[70]	=True cat = HaemInf
BILFPAS - PsAer in sputum	PublicCysticFibrosisAnnualReview	[71]	=True cat = PsAer
BILFPAC - PsAer in cough swab	PublicCysticFibrosisAnnualReview	[72]	=True cat = PsAer
BILFOPS -Other Pseud in sputum	PublicCysticFibrosisAnnualReview	[73]	=True cat = Other Pseud
BILFOPC - Other Pseud in cough swab	PublicCysticFibrosisAnnualReview	[74]	=True cat = Other Pseud
BacteriologyInLastPeriodFoundBurkholderiaInSputumCulture	PublicCysticFibrosisAnnualReview	[75]	=True cat = Burk
BacteriologyInLastPeriodFoundBurkholderiaInCoughSwabCulture	PublicCysticFibrosisAnnualReview	[76]	=True cat = Burk
BacteriologyInLastPeriodFoundAspergillusInSputumCulture	PublicCysticFibrosisAnnualReview	[77]	=True cat = Asp
BacteriologyInLastPeriodFoundAspergillusInCoughSwabCulture	PublicCysticFibrosisAnnualReview	[78]	=True cat = Asp
BacteriologyInLastPeriodFoundCandidaInSputumCulture	PublicCysticFibrosisAnnualReview	[79]	=True cat = Candida
BacteriologyInLastPeriodFoundCandidaInCoughSwabCulture	PublicCysticFibrosisAnnualReview	[80]	=True cat = Candida
BILPOOIS - Other organism in sputum	PublicCysticFibrosisAnnualReview	[81]	=True cat=OtherOrganim
BILPOOIC - Other organism in cough swab	PublicCysticFibrosisAnnualReview	[82]	=True cat=OtherOrganim

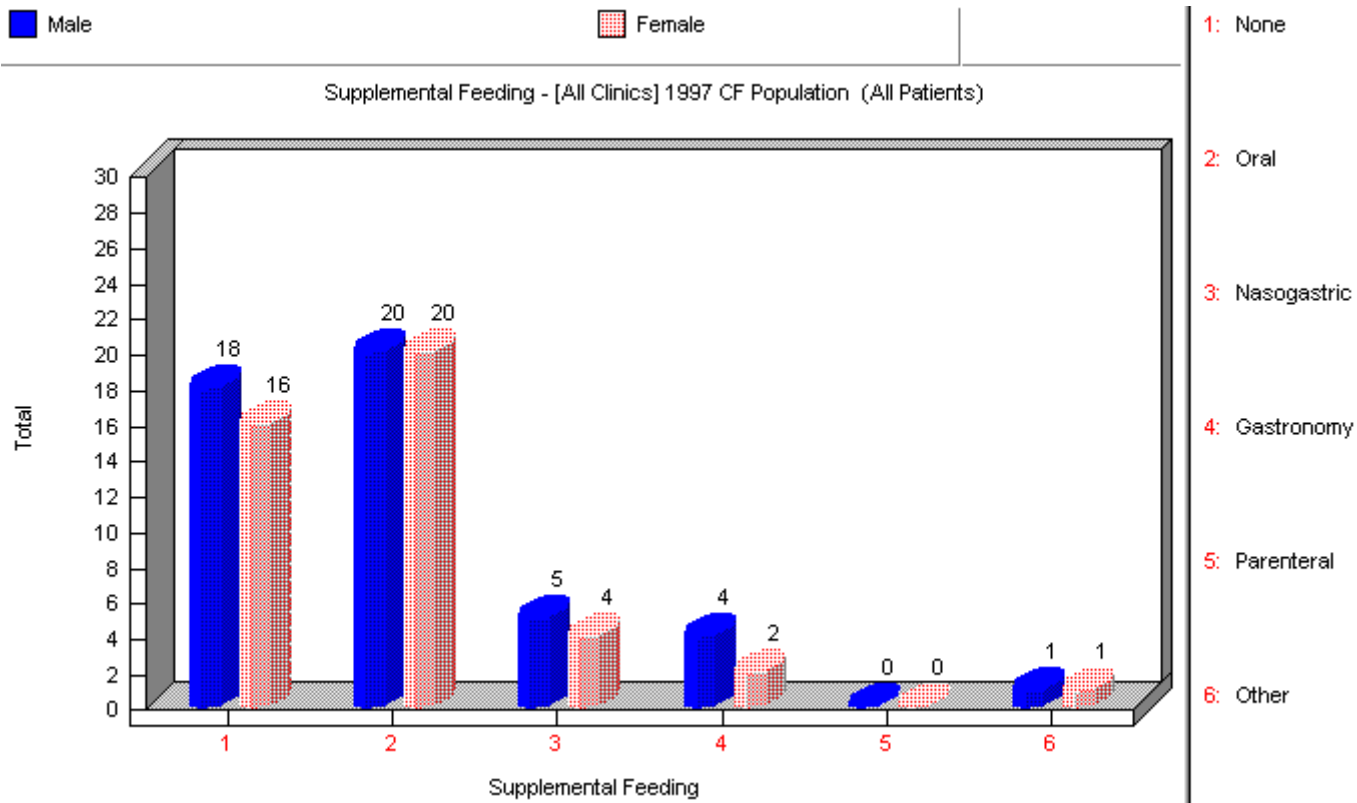
For Sex Split

SexAtBirth	PublicPatientBiography	[9/10/11]
------------	------------------------	-----------

For Age Groups / Child vs Adult Split

YearofBirth	PublicPatientBiography	[7]
MonthOfBirth	PublicPatientBiography	[8]

Supplemental Feeding



Supplemental Feeding

This graph shows the categories patients fall into for supplemental feeding. Patients are selected if they have attended for Annual Review in the year being analysed.

Splits are available for:

- Sex
- Chronic Pseudomonas infection – If Chronic Pseudomonas infection was checked as a ‘Complication in the last period’ on the Annual Review form
- Age Groups – in 5 year age bands (age as at 31st December in the year being analysed)
- Child vs Adult – Under 16s vs 16 years and over (age as at 31st December in the year being analysed)
- Chronic Staphylococcus infection – If Chronic Staphylococcus aureus infection was checked as a ‘Complication in the last period’ on the Annual Review form
- Cepacia infection – if Burkholderia (Cepaciae) was cultured in the last period in either sputum culture or cough swab

To view a list of items entered in ‘Other’, right click the mouse on the ‘Other’ bar. The list displayed may be copied to the clipboard if required.

Data Specification

Data Fields Used

FieldName	Table	Field ID	Criteria
PatientIdentifier	PublicCysticFibrosisAnnualReview	[1]	-
ClinicCode	PublicCysticFibrosisAnnualReview	[2]	Parameter
YearOfVisit	PublicCysticFibrosisAnnualReview	[6]	Parameter
MonthOfVisit	PublicCysticFibrosisAnnualReview	[5]	Numeric
DayOfVisit	PublicCysticFibrosisAnnualReview	[4]	Numeric
ReceivedNoSupplementalFeedingInLastPeriod	PublicCysticFibrosisAnnualReview		=True
ReceivedOralSupplementsInLastPeriod	PublicCysticFibrosisAnnualReview		=True
ReceivedNasogastricFeedingInLastPeriod	PublicCysticFibrosisAnnualReview		=True
ReceivedFeedingByGastrostomyInLastPeriod	PublicCysticFibrosisAnnualReview		=True
ReceivedPerenteralFeedingInLastPeriod	PublicCysticFibrosisAnnualReview		=True
ReceivedOtherSupplementalFeedingInLastPeriod	PublicCysticFibrosisAnnualReview		=True

For Sex Split

SexAtBirth	PublicPatientBiography	[9/10/11]
------------	------------------------	-----------

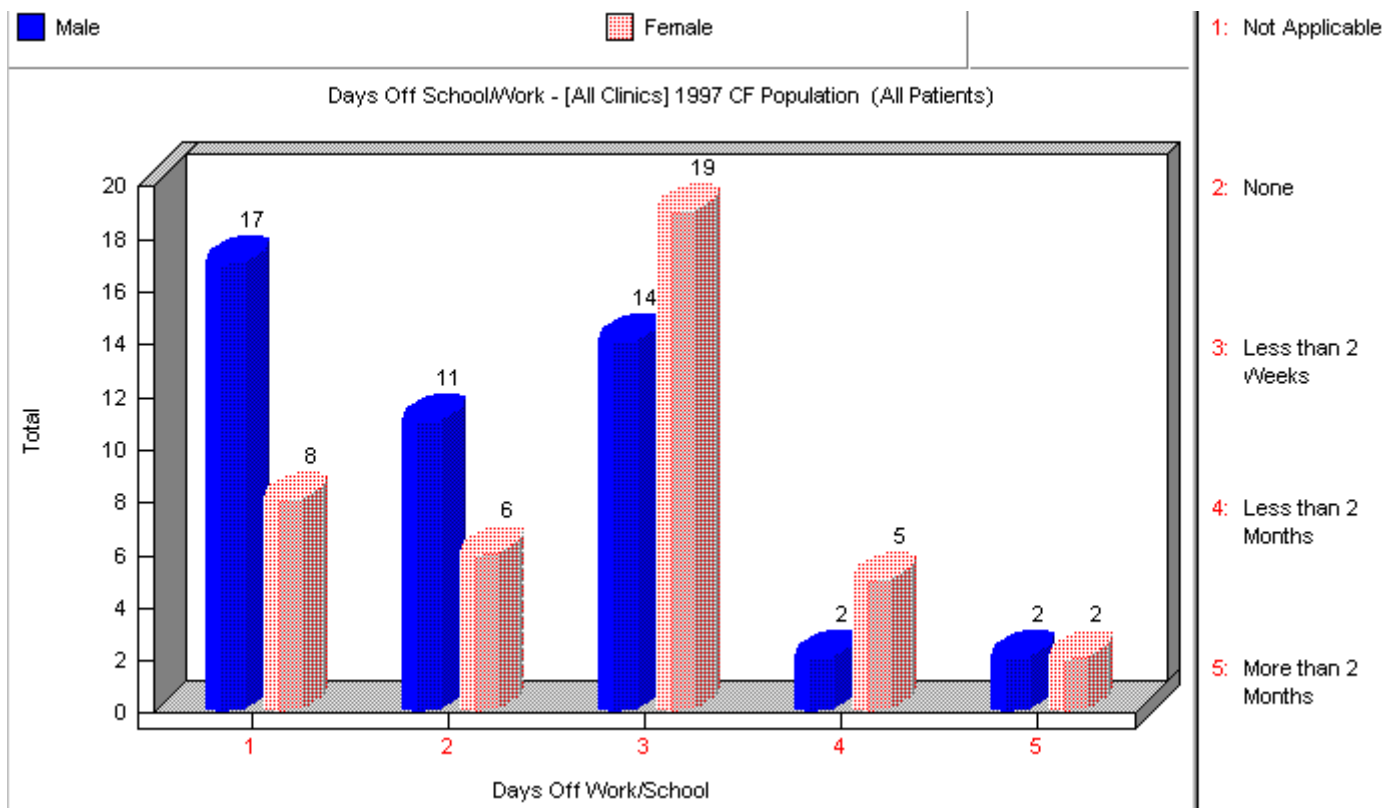
For Chronic Pseudomonas infection/ Chronic Staphylococcus infection/ Cepacia infection Splits

ComplicationInTheLastPeriodofChronicPseudomonasInfection	PublicCysticFibrosisAnnualReview	[13]	=True
ComplicationInTheLastPeriodofChronicStaphAureusInfection	PublicCysticFibrosisAnnualReview	[14]	=True
BacteriologyInLastPeriodFoundBurkholderiaInSputumCulture	PublicCysticFibrosisAnnualReview	[75]	=True
BacteriologyInLastPeriodFoundBurkholderiaInCoughSwab	PublicCysticFibrosisAnnualReview	[76]	=True

For Age Groups / Child vs Adult Splits

YearOfBirth	PublicPatientBiography	[8]
MonthOfBirth	PublicPatientBiography	[7]

Days Off School/Work



Days off School / Work

This graph shows the number of days off school or work as appropriate. Patients are selected if they have attended for Annual Review in the year being analysed..

Splits are available for:

- Sex
- Chronic Pseudomonas infection – If Chronic Pseudomonas infection was checked as a ‘Complication in the last period’ on the Annual Review form
- Age Groups – in 5 year age bands (age as at 31st December in the year being analysed)
- Child vs Adult – Under 16s vs 16 years and over (age as at 31st December in the year being analysed)
- Chronic Staphylococcus infection – If Chronic Staphylococcus aureus infection was checked as a ‘Complication in the last period’ on the Annual Review form
- Cepacia infection – if Burkholderia (Cepaciae) was cultured in the last period in either sputum culture or cough swab

Data Specification

Data Fields Used

FieldName	Table	Field ID	Criteria
PatientIdentifier	PublicCysticFibrosisAnnualReview	[1]	-
ClinicCode	PublicCysticFibrosisAnnualReview	[2]	Parameter
YearOfVisit	PublicCysticFibrosisAnnualReview	[6]	Parameter
MonthOfVisit	PublicCysticFibrosisAnnualReview	[5]	Numeric
DayOfVisit	PublicCysticFibrosisAnnualReview	[4]	Numeric
NumberOfDaysOffSchoolAndOrWorkInLastPeriod	PublicCysticFibrosisAnnualReview	[100/101/102/103/104]	={"Does not attend school or work", "zero", "Less than two weeks", "Less

			than two months", "two months or more" }
--	--	--	--

For Sex Split

SexAtBirth	PublicPatientBiography	[9/10/11]
------------	------------------------	-----------

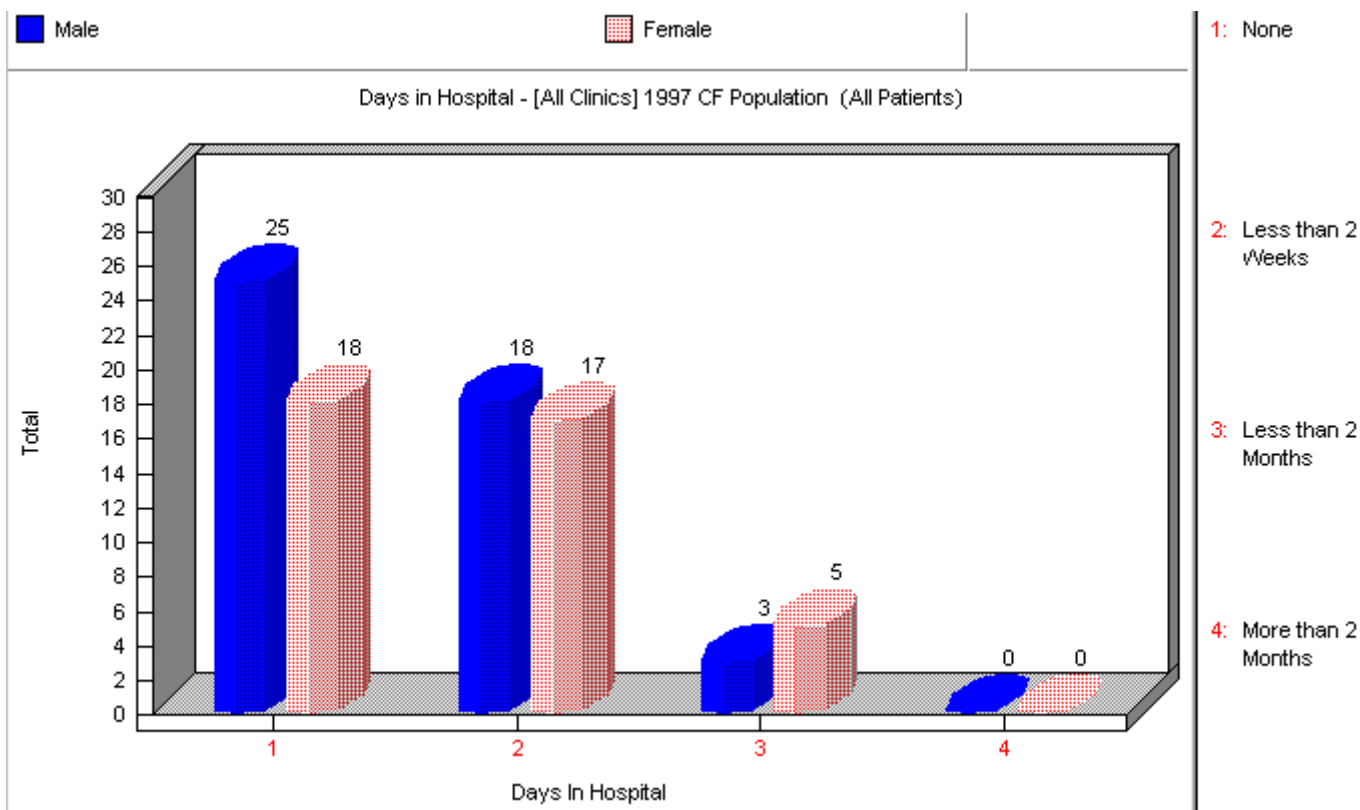
For Chronic Pseudomonas infection/ Chronic Staphylococcus infection/ Cepacia infection Splits

ComplicationInTheLastPeriodofChronic PseudomonasInfection	PublicCysticFibrosisAnnualReview	[13]	=True
ComplicationInTheLastPeriodofChronic StaphAureusInfection	PublicCysticFibrosisAnnualReview	[14]	=True
BacteriologyInLastPeriodFoundBurkhold eriaInSputumCulture	PublicCysticFibrosisAnnualReview	[75]	=True
BacteriologyInLastPeriodFoundBurkhold eriaInCoughSwab	PublicCysticFibrosisAnnualReview	[76]	=True

For Age Groups / Child vs Adult Splits

YearOfBirth	PublicPatientBiography	[8]
MonthOfBirth	PublicPatientBiography	[7]

Days in Hospital



Days in Hospital

This graph shows the numbers of days spent in hospital. Patients are selected if they have attended for Annual Review in the year being analysed..

Splits are available for:

- Sex
- Chronic Pseudomonas infection – If Chronic Pseudomonas infection was checked as a ‘Complication in the last period’ on the Annual Review form
- Age Groups – in 5 year age bands (age as at 31st December in the year being analysed)
- Child vs Adult – Under 16s vs 16 years and over (age as at 31st December in the year being analysed)
- Chronic Staphylococcus infection – If Chronic Staphylococcus aureus infection was checked as a ‘Complication in the last period’ on the Annual Review form
- Cepacia infection – if Burkholderia (Cepaciae) was cultured in the last period in either sputum culture or cough swab

Data Specification

Data Fields Used

FieldName	Table	Field ID	Criteria
PatientIdentifier	PublicCysticFibrosisAnnualReview	[1]	-
ClinicCode	PublicCysticFibrosisAnnualReview	[2]	Parameter
YearOfVisit	PublicCysticFibrosisAnnualReview	[6]	Parameter
MonthOfVisit	PublicCysticFibrosisAnnualReview	[5]	Numeric
DayOfVisit	PublicCysticFibrosisAnnualReview	[4]	Numeric
NumberOfDaysInHospitalInLastPeriod	PublicCysticFibrosisAnnualReview	[105/ 106/ 107/ 108]	{"zero", "Less than two weeks", "Less than two months", "two months or

			more" }
--	--	--	---------

For Sex Split

SexAtBirth	PublicPatientBiography	[9/10/11]
------------	------------------------	-----------

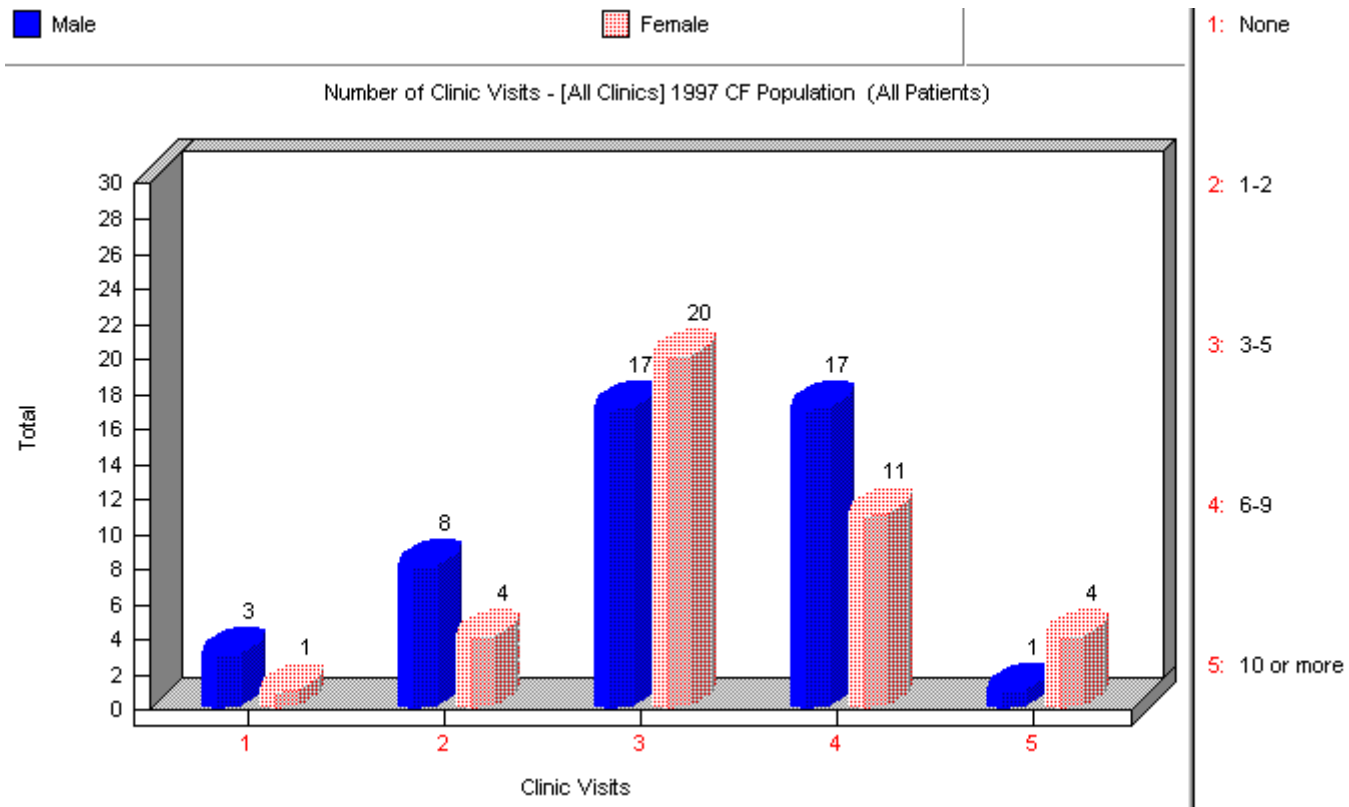
For Chronic Pseudomonas infection/ Chronic Staphylococcus infection/ Cepacia infection Splits

ComplicationInTheLastPeriodofChronic PseudomonasInfection	PublicCysticFibrosisAnnualReview	[13]	=True
ComplicationInTheLastPeriodofChronic StaphAureusInfection	PublicCysticFibrosisAnnualReview	[14]	=True
BacteriologyInLastPeriodFoundBurkhold eriaInSputumCulture	PublicCysticFibrosisAnnualReview	[75]	=True
BacteriologyInLastPeriodFoundBurkhold eriaInCoughSwab	PublicCysticFibrosisAnnualReview	[76]	=True

For Age Groups / Child vs Adult Splits

YearOfBirth	PublicPatientBiography	[8]
MonthOfBirth	PublicPatientBiography	[7]

Number of Clinic Visits



Number of Clinic Visits

This graph shows the numbers of clinic visits made for CF clinics in the annual review period. Patients are selected if they have attended for Annual Review in the year being analysed.

Splits are available for:

- Sex
- Chronic Pseudomonas infection – If Chronic Pseudomonas infection was checked as a ‘Complication in the last period’ on the Annual Review form
- Age Groups – in 5 year age bands (age as at 31st December in the year being analysed)
- Child vs Adult – Under 16s vs 16 years and over (age as at 31st December in the year being analysed)
- Chronic Staphylococcus infection – If Chronic Staphylococcus aureus infection was checked as a ‘Complication in the last period’ on the Annual Review form
- Cepacia infection – if Burkholderia (Cepaciae) was cultured in the last period in either sputum culture or cough swab

Data Specification

Data Fields Used

FieldName	Table	Field ID	Criteria
PatientIdentifier	PublicCysticFibrosisAnnualReview	[1]	-
ClinicCode	PublicCysticFibrosisAnnualReview	[2]	Parameter
YearOfVisit	PublicCysticFibrosisAnnualReview	[6]	Parameter
MonthOfVisit	PublicCysticFibrosisAnnualReview	[5]	Numeric
DayOfVisit	PublicCysticFibrosisAnnualReview	[4]	Numeric
NumberOfCysticFibrosisClinicVisitsInLastPeriod	PublicCysticFibrosisAnnualReview	[109]	Numeric

For Sex Split

SexAtBirth	PublicPatientBiography	[9/10/11]
------------	------------------------	-----------

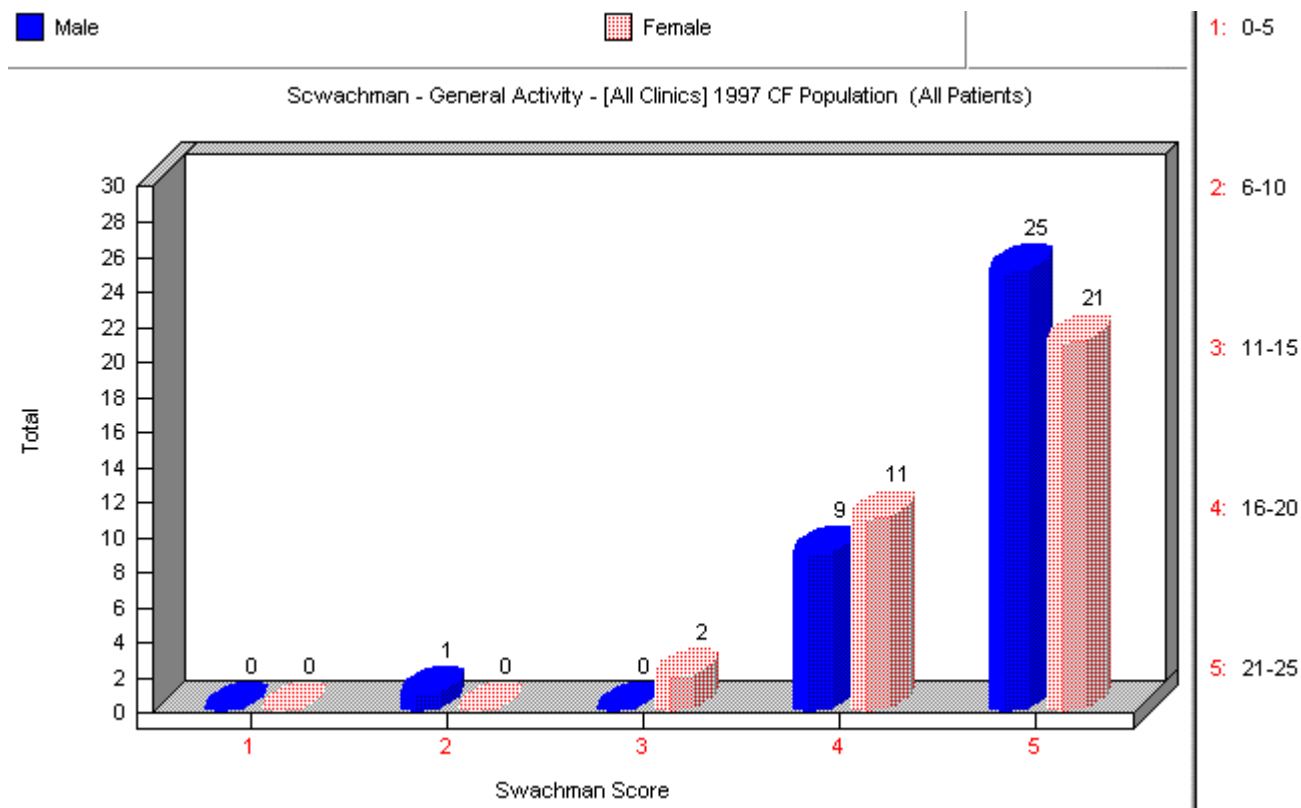
For Chronic Pseudomonas infection/ Chronic Staphylococcus infection/ Cepacia infection Splits

ComplicationInTheLastPeriodofChronicPseudomonasInfection	PublicCysticFibrosisAnnualReview	[13]	=True
ComplicationInTheLastPeriodofChronicStaphAureusInfection	PublicCysticFibrosisAnnualReview	[14]	=True
BacteriologyInLastPeriodFoundBurkholderiaInSputumCulture	PublicCysticFibrosisAnnualReview	[75]	=True
BacteriologyInLastPeriodFoundBurkholderiaInCoughSwab	PublicCysticFibrosisAnnualReview	[76]	=True

For Age Groups / Child vs Adult Splits

YearOfBirth	PublicPatientBiography	[8]
MonthOfBirth	PublicPatientBiography	[7]

Swachman - General Activity



Swachman Score - General Activity

This graph shows the splits for the Schwachman General Activity Scores. Patients are selected if they have attended for Annual Review in the year being analysed.

Splits are available for:

- Sex
- Chronic Pseudomonas infection – If Chronic Pseudomonas infection was checked as a ‘Complication in the last period’ on the Annual Review form
- Age Groups – in 5 year age bands (age as at 31st December in the year being analysed)
- Child vs Adult – Under 16s vs 16 years and over (age as at 31st December in the year being analysed)
- Chronic Staphylococcus infection – If Chronic Staphylococcus aureus infection was checked as a ‘Complication in the last period’ on the Annual Review form
- Cepacia infection – if Burkholderia (Cepaciae) was cultured in the last period in either sputum culture or cough swab

Data Specification

Data Fields Used

FieldName	Table	Field ID	Criteria
PatientIdentifier	PublicCysticFibrosisAnnualReview	[1]	-
ClinicCode	PublicCysticFibrosisAnnualReview	[2]	Parameter
YearOfVisit	PublicCysticFibrosisAnnualReview	[6]	Parameter
MonthOfVisit	PublicCysticFibrosisAnnualReview	[5]	Numeric
DayOfVisit	PublicCysticFibrosisAnnualReview	[4]	Numeric
MostRecentSwachmanScoreGeneralActivityScoreInLastPeriod	PublicCysticFibrosisAnnualReview	[136]	Numeric

For Sex Split

SexAtBirth	PublicPatientBiography	[9/10/11]
------------	------------------------	-----------

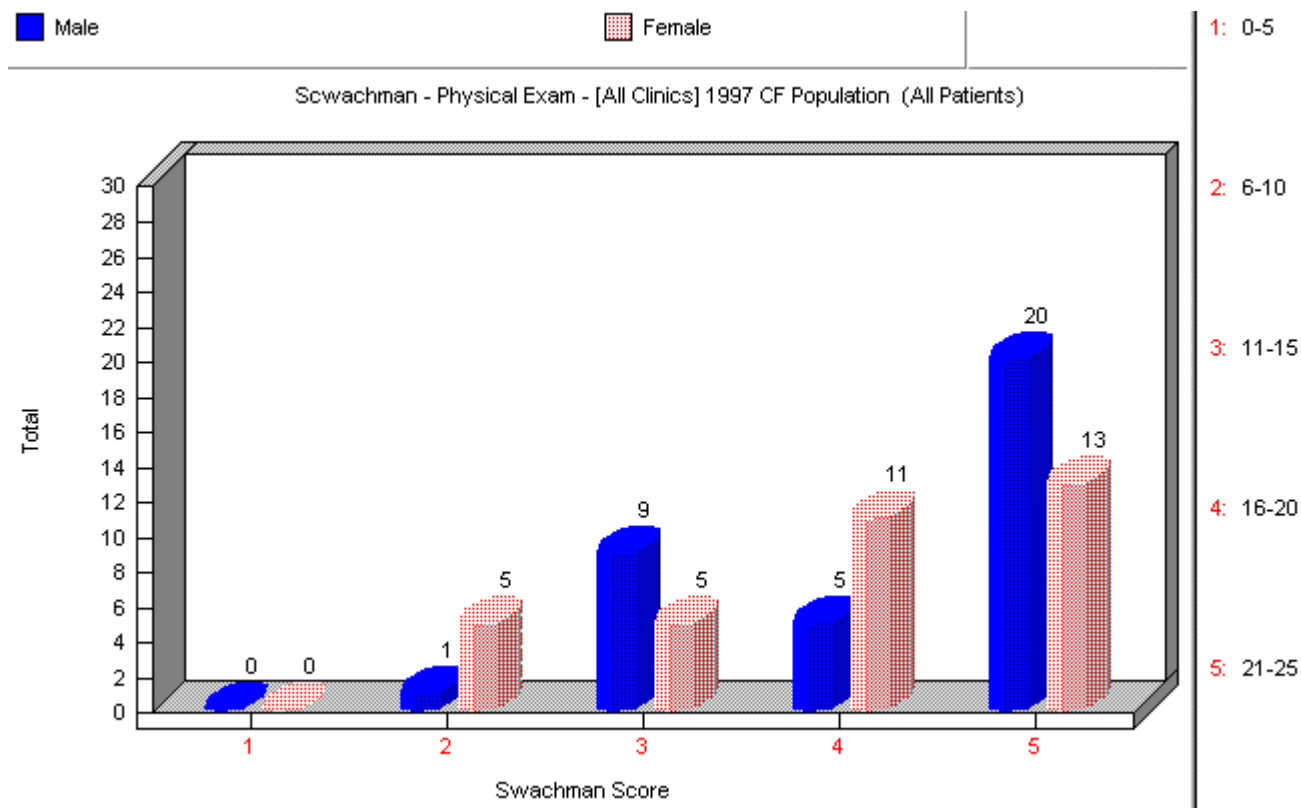
For Chronic Pseudomonas infection/ Chronic Staphylococcus infection/ Cepacia infection Splits

ComplicationInTheLastPeriodofChronicPseudomonasInfection	PublicCysticFibrosisAnnualReview	[13]	=True
ComplicationInTheLastPeriodofChronicStaphAureusInfection	PublicCysticFibrosisAnnualReview	[14]	=True
BacteriologyInLastPeriodFoundBurkholderiaInSputumCulture	PublicCysticFibrosisAnnualReview	[75]	=True
BacteriologyInLastPeriodFoundBurkholderiaInCoughSwab	PublicCysticFibrosisAnnualReview	[76]	=True

For Age Groups / Child vs Adult Splits

YearOfBirth	PublicPatientBiography	[8]
MonthOfBirth	PublicPatientBiography	[7]

Scwachman - Physical Exam



Scwachman Score - Physical Examination

This graph shows the splits for the Scwachman Physical Exam Scores. Patients are selected if they have attended for Annual Review in the year being analysed..

Splits are available for:

- Sex
- Chronic Pseudomonas infection – If Chronic Pseudomonas infection was checked as a ‘Complication in the last period’ on the Annual Review form
- Age Groups – in 5 year age bands (age as at 31st December in the year being analysed)
- Child vs Adult – Under 16s vs 16 years and over (age as at 31st December in the year being analysed)
- Chronic Staphylococcus infection – If Chronic Staphylococcus aureus infection was checked as a ‘Complication in the last period’ on the Annual Review form
- Cepacia infection – if Burkholderia (Cepaciae) was cultured in the last period in either sputum culture or cough swab

Data Specification

Data Fields Used

FieldName	Table	Field ID	Criteria
PatientIdentifier	PublicCysticFibrosisAnnualReview	[1]	-
ClinicCode	PublicCysticFibrosisAnnualReview	[2]	Parameter
YearOfVisit	PublicCysticFibrosisAnnualReview	[6]	Parameter
MonthOfVisit	PublicCysticFibrosisAnnualReview	[5]	Numeric
DayOfVisit	PublicCysticFibrosisAnnualReview	[4]	Numeric
MostRecentScwachmanScorePhysicalExaminationScoreInLastPeriod	PublicCysticFibrosisAnnualReview	[137]	Numeric

For Sex Split

SexAtBirth	PublicPatientBiography	[9/10/11]
------------	------------------------	-----------

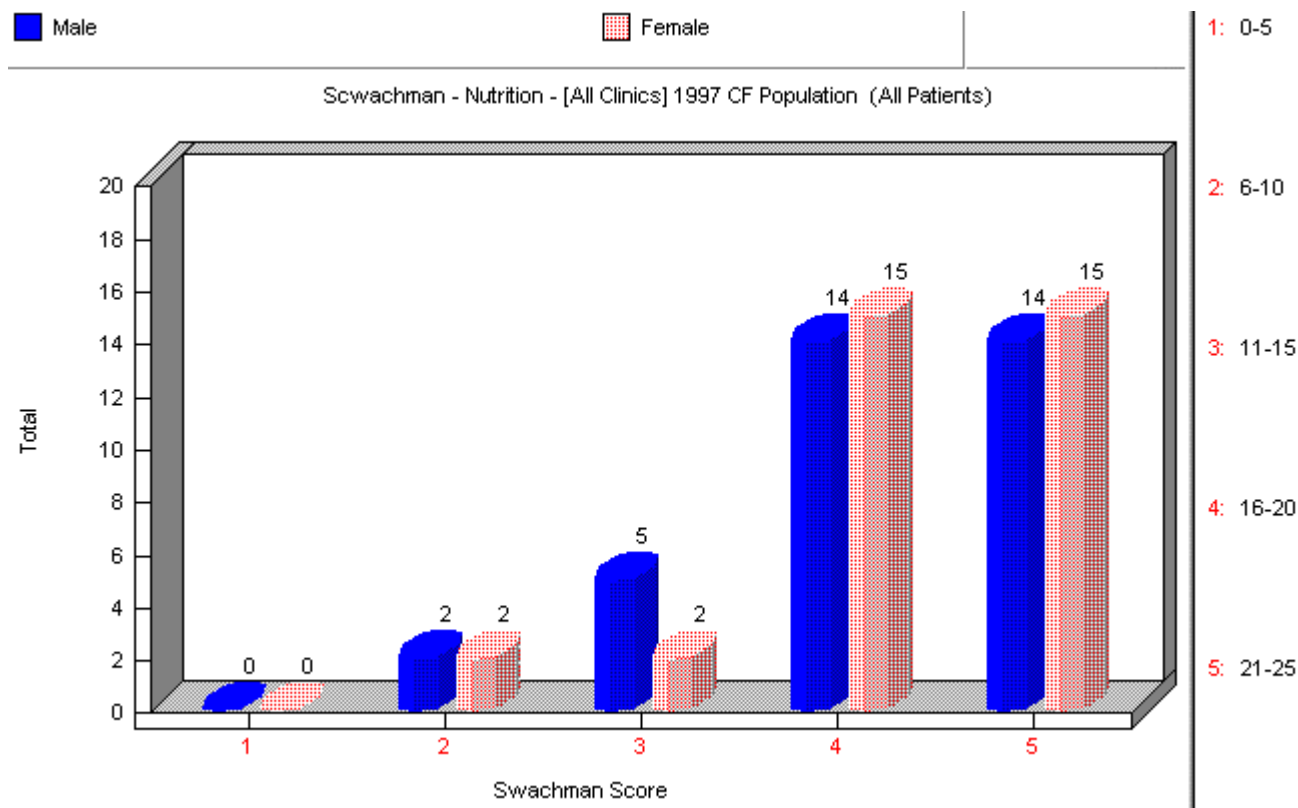
For Chronic Pseudomonas infection/ Chronic Staphylococcus infection/ Cepacia infection Splits

ComplicationInTheLastPeriodofChronic PseudomonasInfection	PublicCysticFibrosisAnnualReview	[13]	=True
ComplicationInTheLastPeriodofChronic StaphAureusInfection	PublicCysticFibrosisAnnualReview	[14]	=True
BacteriologyInLastPeriodFoundBurkhold eriaInSputumCulture	PublicCysticFibrosisAnnualReview	[75]	=True
BacteriologyInLastPeriodFoundBurkhold eriaInCoughSwab	PublicCysticFibrosisAnnualReview	[76]	=True

For Age Groups / Child vs Adult Splits

YearOfBirth	PublicPatientBiography	[8]
MonthOfBirth	PublicPatientBiography	[7]

Scwachman - Nutrition



Scwachman Score - Nutrition

This graph shows the splits for the Scwachman Nutrition Scores. Patients are selected if they have attended for Annual Review in the year being analysed.

Splits are available for:

- Sex
- Chronic Pseudomonas infection – If Chronic Pseudomonas infection was checked as a ‘Complication in the last period’ on the Annual Review form
- Age Groups – in 5 year age bands (age as at 31st December in the year being analysed)
- Child vs Adult – Under 16s vs 16 years and over (age as at 31st December in the year being analysed)
- Chronic Staphylococcus infection – If Chronic Staphylococcus aureus infection was checked as a ‘Complication in the last period’ on the Annual Review form
- Cepacia infection – if Burkholderia (Cepaciae) was cultured in the last period in either sputum culture or cough swab

Data Specification

Data Fields Used

FieldName	Table	Field ID	Criteria
PatientIdentifier	PublicCysticFibrosisAnnualReview	[1]	-
ClinicCode	PublicCysticFibrosisAnnualReview	[2]	Parameter
YearOfVisit	PublicCysticFibrosisAnnualReview	[6]	Parameter
MonthOfVisit	PublicCysticFibrosisAnnualReview	[5]	Numeric

DayOfVisit	PublicCysticFibrosisAnnualReview	[4]	Numeric
MostRecentScwachmanScoreNutritionScoreInLastPeriod	PublicCysticFibrosisAnnualReview	[138]	Numeric

For Sex Split

SexAtBirth	PublicPatientBiography	[9/10/11]
------------	------------------------	-----------

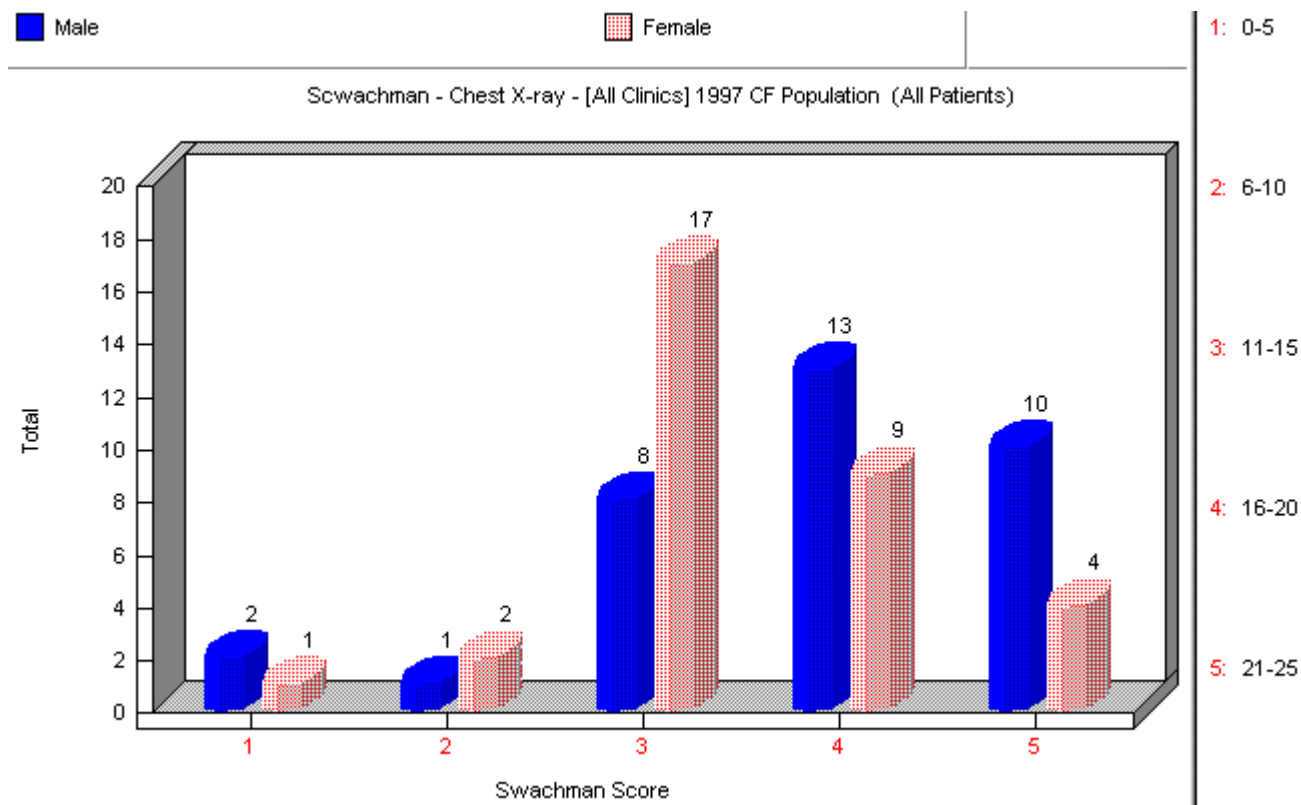
For Chronic Pseudomonas infection/ Chronic Staphylococcus infection/ Cepacia infection Splits

ComplicationInTheLastPeriodofChronicPseudomonasInfection	PublicCysticFibrosisAnnualReview	[13]	=True
ComplicationInTheLastPeriodofChronicStaphAureusInfection	PublicCysticFibrosisAnnualReview	[14]	=True
BacteriologyInLastPeriodFoundBurkholderiaInSputumCulture	PublicCysticFibrosisAnnualReview	[75]	=True
BacteriologyInLastPeriodFoundBurkholderiaInCoughSwab	PublicCysticFibrosisAnnualReview	[76]	=True

For Age Groups / Child vs Adult Splits

YearOfBirth	PublicPatientBiography	[8]
MonthOfBirth	PublicPatientBiography	[7]

Scwachman - Chest X-ray



Scwachman Score - Chest X-ray

This graph shows the splits for the Scwachman Chest X-ray Scores. Patients are selected if they have attended for Annual Review in the year being analysed.

Splits are available for:

- Sex
- Chronic Pseudomonas infection – If Chronic Pseudomonas infection was checked as a ‘Complication in the last period’ on the Annual Review form
- Age Groups – in 5 year age bands (age as at 31st December in the year being analysed)
- Child vs Adult – Under 16s vs 16 years and over (age as at 31st December in the year being analysed)
- Chronic Staphylococcus infection – If Chronic Staphylococcus aureus infection was checked as a ‘Complication in the last period’ on the Annual Review form
- Cepacia infection – if Burkholderia (Cepaciae) was cultured in the last period in either sputum culture or cough swab

Data Specification

Data Fields Used

FieldName	Table	Field ID	Criteria
PatientIdentifier	PublicCysticFibrosisAnnualReview	[1]	-
ClinicCode	PublicCysticFibrosisAnnualReview	[2]	Parameter
YearOfVisit	PublicCysticFibrosisAnnualReview	[6]	Parameter
MonthOfVisit	PublicCysticFibrosisAnnualReview	[5]	Numeric
DayOfVisit	PublicCysticFibrosisAnnualReview	[4]	Numeric
MostRecentScwachmanScoreChest XrayScoreInLastPeriod	PublicCysticFibrosisAnnualReview	[139]	Numeric

For Sex Split

SexAtBirth	PublicPatientBiography	[9/10/11]
------------	------------------------	-----------

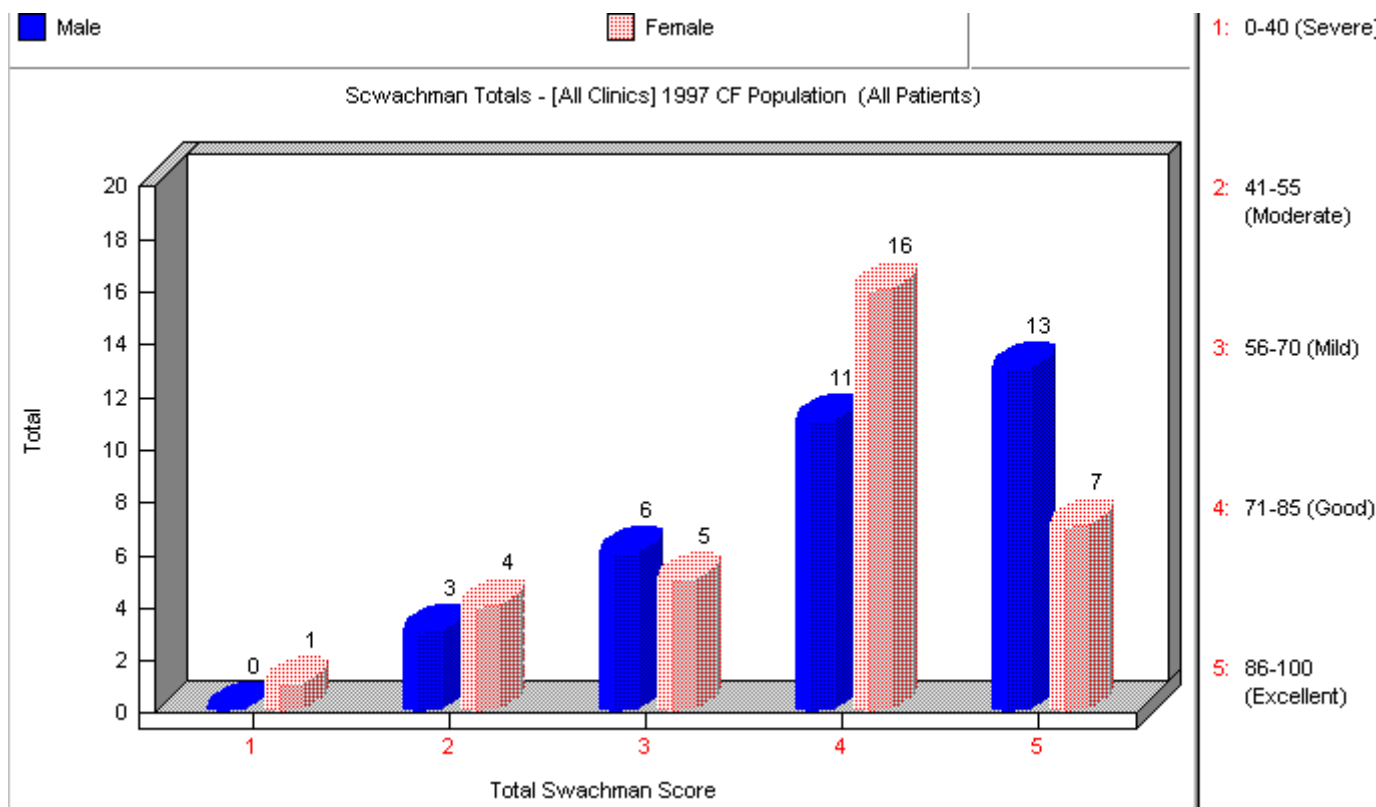
For Chronic Pseudomonas infection/ Chronic Staphylococcus infection/ Cepacia infection Splits

ComplicationInTheLastPeriodofChronicPseudomonasInfection	PublicCysticFibrosisAnnualReview	[13]	=True
ComplicationInTheLastPeriodofChronicStaphAureusInfection	PublicCysticFibrosisAnnualReview	[14]	=True
BacteriologyInLastPeriodFoundBurkholderiaInSputumCulture	PublicCysticFibrosisAnnualReview	[75]	=True
BacteriologyInLastPeriodFoundBurkholderiaInCoughSwab	PublicCysticFibrosisAnnualReview	[76]	=True

For Age Groups / Child vs Adult Splits

YearOfBirth	PublicPatientBiography	[8]
MonthOfBirth	PublicPatientBiography	[7]

Scwachman - Totals



Scwachman - Total score

This graph shows the splits for the overall total Scwachman Scores. Patients are selected if they have attended for Annual Review in the year being analysed.

Splits are available for:

- Sex
- Chronic Pseudomonas infection – If Chronic Pseudomonas infection was checked as a ‘Complication in the last period’ on the Annual Review form
- Age Groups – in 5 year age bands (age as at 31st December in the year being analysed)
- Child vs Adult – Under 16s vs 16 years and over (age as at 31st December in the year being analysed)
- Chronic Staphylococcus infection – If Chronic Staphylococcus aureus infection was checked as a ‘Complication in the last period’ on the Annual Review form
- Cepacia infection – if Burkholderia (Cepaciae) was cultured in the last period in either sputum culture or cough swab

Data Specification

Data Fields Used

FieldName	Table	Field ID	Criteria
PatientIdentifier	PublicCysticFibrosisAnnualReview	[1]	-
ClinicCode	PublicCysticFibrosisAnnualReview	[2]	Parameter
YearOfVisit	PublicCysticFibrosisAnnualReview	[6]	Parameter
MonthOfVisit	PublicCysticFibrosisAnnualReview	[5]	Numeric
DayOfVisit	PublicCysticFibrosisAnnualReview	[4]	Numeric
MostRecentScwachmanScoreInLastPeriod	PublicCysticFibrosisAnnualReview	[140]	Numeric

For Sex Split

SexAtBirth	PublicPatientBiography	[9/10/11]
------------	------------------------	-----------

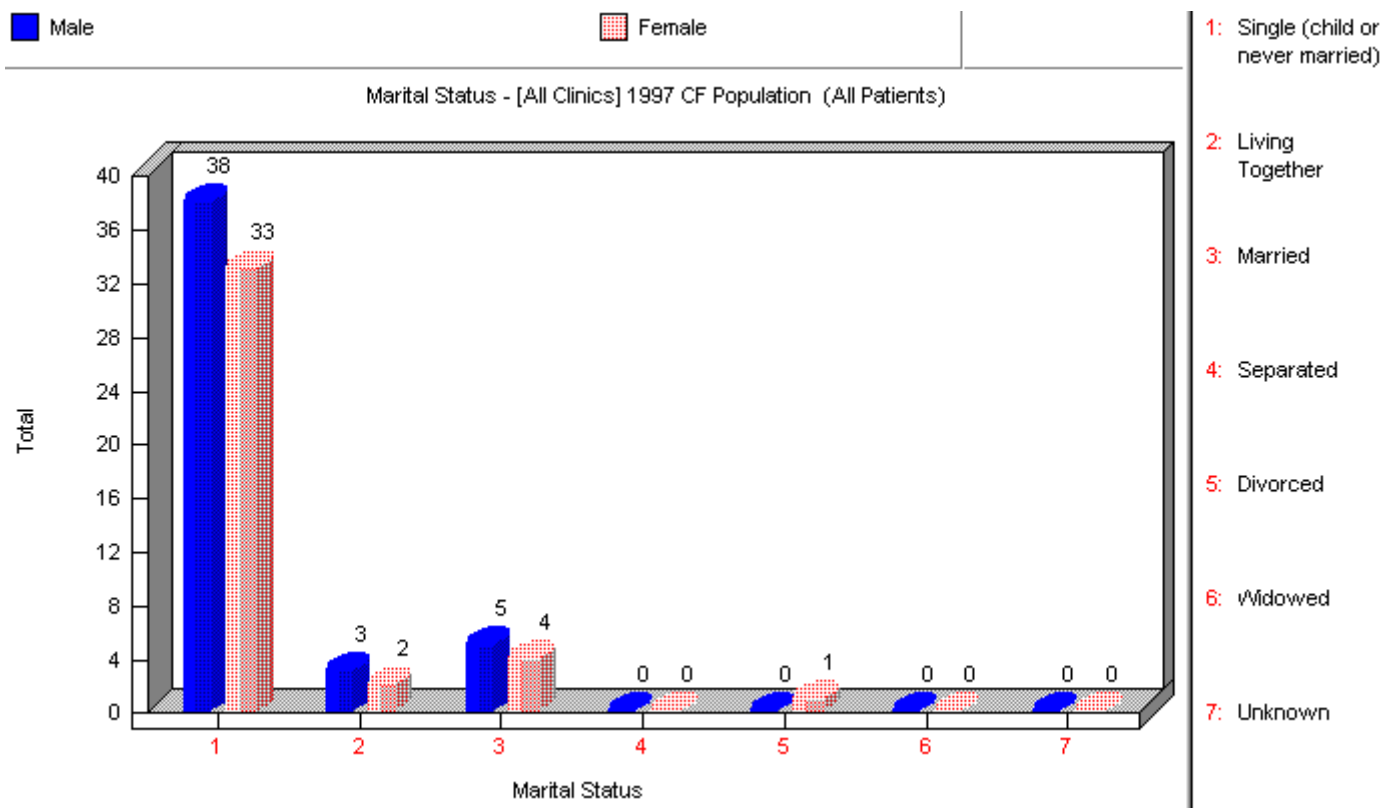
For Chronic Pseudomonas infection/ Chronic Staphylococcus infection/ Cepacia infection Splits

ComplicationInTheLastPeriodofChronicPseudomonasInfection	PublicCysticFibrosisAnnualReview	[13]	=True
ComplicationInTheLastPeriodofChronicStaphAureusInfection	PublicCysticFibrosisAnnualReview	[14]	=True
BacteriologyInLastPeriodFoundBurkholderiaInSputumCulture	PublicCysticFibrosisAnnualReview	[75]	=True
BacteriologyInLastPeriodFoundBurkholderiaInCoughSwab	PublicCysticFibrosisAnnualReview	[76]	=True

For Age Groups / Child vs Adult Splits

YearOfBirth	PublicPatientBiography	[8]
MonthOfBirth	PublicPatientBiography	[7]

Marital Status



Marital Status

This graph shows patients' marital status. Patients are selected if they have attended for Annual Review in the year being analysed

Splits are available for:

- Sex
- Age Groups – in 5 year age bands (age as at 31st December in the year being analysed)
- Child vs Adult – Under 16s vs 16 years and over (age as at 31st December in the year being analysed)

Data Specification

Data Fields Used

FieldName	Table	Field ID	Criteria
PatientIdentifier	PublicCysticFibrosisAnnualReview	[1]	-
ClinicCode	PublicCysticFibrosisAnnualReview	[2]	Parameter
YearOfVisit	PublicCysticFibrosisAnnualReview	[6]	Parameter
MonthOfVisit	PublicCysticFibrosisAnnualReview	[5]	Numeric
DayOfVisit	PublicCysticFibrosisAnnualReview	[4]	Numeric
MaritalStatusAtVisit	PublicCysticFibrosisAnnualReview	[145/ 146/ 147/ 148/ 149/ 150/ 151]	{"Single (never married)", "Living Together", "Separated", "Divorced", "Widowed", "Unknown"}
YearofBirth	PublicPatientBiography	[8]	Numeric
MonthofBirth	PublicPatientBiography	[7]	Numeric

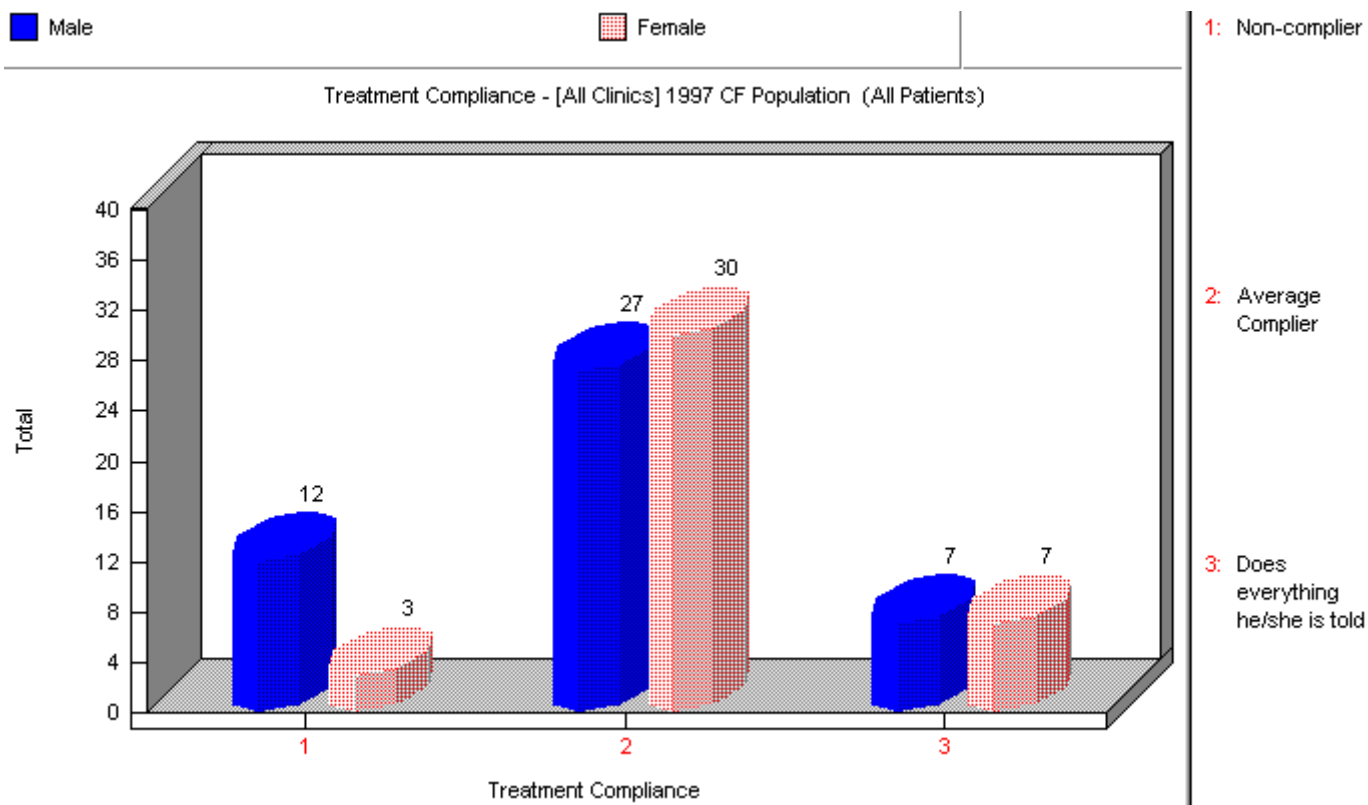
For Sex Split

SexAtBirth	PublicPatientBiography	[9/10/11]
------------	------------------------	-----------

For Age Groups / Child vs Adult Split

YearofBirth	PublicPatientBiography	[7]
MonthOfBirth	PublicPatientBiography	[8]

Treatment Compliance



Treatment Compliance

This graph shows the CF population's compliance status. Patients are selected if they have attended for Annual Review in the year being analysed..

Splits are available for:

- Sex
- Chronic Pseudomonas infection – If Chronic Pseudomonas infection was checked as a 'Complication in the last period' on the Annual Review form
- Age Groups – in 5 year age bands (age as at 31st December in the year being analysed)
- Child vs Adult – Under 16s vs 16 years and over (age as at 31st December in the year being analysed)
- Chronic Staphylococcus infection – If Chronic Staphylococcus aureus infection was checked as a 'Complication in the last period' on the Annual Review form
- Cepacia infection – if Burkholderia (Cepaciae) was cultured in the last period in either sputum culture or cough swab

Data Specification

Data Fields Used

FieldName	Table	Field ID	Criteria
PatientIdentifier	PublicCysticFibrosisAnnualReview	[1]	-
ClinicCode	PublicCysticFibrosisAnnualReview	[2]	Parameter
YearOfVisit	PublicCysticFibrosisAnnualReview	[6]	Parameter
MonthOfVisit	PublicCysticFibrosisAnnualReview	[5]	Numeric
DayOfVisit	PublicCysticFibrosisAnnualReview	[4]	Numeric
EstimatedLevelOfTreatmentComplianceAtVisit	PublicCysticFibrosisAnnualReview	[130/ 131/ 132]	{"Non-complier", "Average Complier", " Does everything he/she

			is told "}
--	--	--	------------

For Sex Split

SexAtBirth	PublicPatientBiography	[9/10/11]
------------	------------------------	-----------

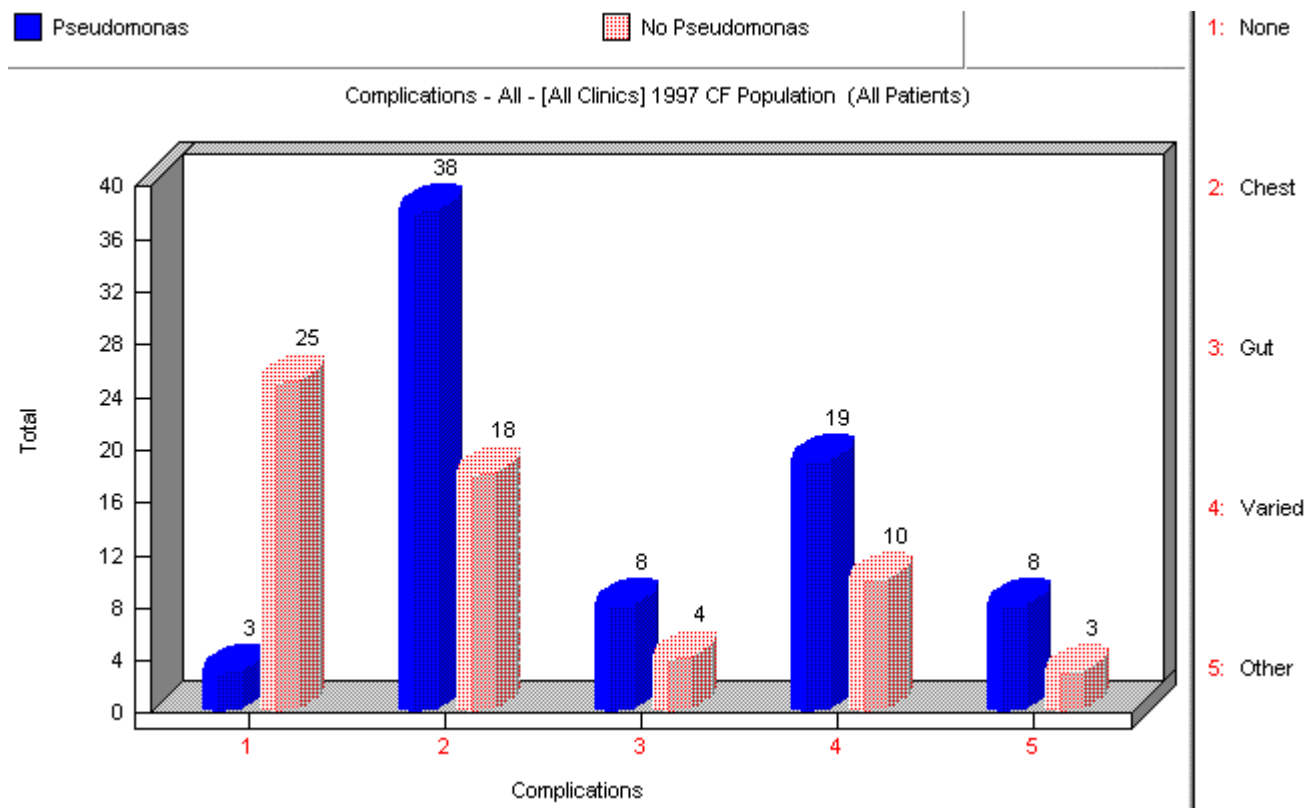
For Chronic Pseudomonas infection/ Chronic Staphylococcus infection/ Cepacia infection Splits

ComplicationInTheLastPeriodofChronic PseudomonasInfection	PublicCysticFibrosisAnnualReview	[13]	=True
ComplicationInTheLastPeriodofChronic StaphAureusInfection	PublicCysticFibrosisAnnualReview	[14]	=True
BacteriologyInLastPeriodFoundBurkhold eriaInSputumCulture	PublicCysticFibrosisAnnualReview	[75]	=True
BacteriologyInLastPeriodFoundBurkhold eriaInCoughSwab	PublicCysticFibrosisAnnualReview	[76]	=True

For Age Groups / Child vs Adult Splits

YearOfBirth	PublicPatientBiography	[8]
MonthOfBirth	PublicPatientBiography	[7]

Complications - All



Complications

This graph shows which complications are most common. Patients are selected if they have attended for Annual Review in the year being analysed

If a patient has more than one complication of a certain category, it is only counted once. Hence, if it is recorded that the patient has had asthma and nasal polyps in the last period, only one chest complication is recorded for that patient.

Splits are available for:

- Sex
- Chronic Pseudomonas infection – If Chronic Pseudomonas infection was checked as a ‘Complication in the last period’ on the Annual Review form
- Age Groups – in 5 year age bands (age as at 31st December in the year being analysed)
- Child vs Adult – Under 16s vs 16 years and over (age as at 31st December in the year being analysed)
- Chronic Staphylococcus infection – If Chronic Staphylococcus aureus infection was checked as a ‘Complication in the last period’ on the Annual Review form
- Cepacia infection – if Burkholderia (Cepaciae) was cultured in the last period in either sputum culture or cough swab

To view a list of items entered in ‘Other’, right click the mouse on the ‘Other’ bar. The list displayed may be copied to the clipboard if required.

Data Specification

Data Fields Used

FieldName	Table	Field ID	Criteria
PatientIdentifier	PublicCysticFibrosisAnnualReview	[1]	-
ClinicCode	PublicCysticFibrosisAnnualReview	[2]	Parameter
YearOfVisit	PublicCysticFibrosisAnnualReview	[6]	Parameter
MonthOfVisit	PublicCysticFibrosisAnnualReview	[5]	Numeric
DayOfVisit	PublicCysticFibrosisAnnualReview	[4]	Numeric
NoComplicationsInLastPeriod	PublicCysticFibrosisAnnualReview	[10]	=True cat = None
ComplicationInLastPeriodOfChronicPseudomonasInfection	PublicCysticFibrosisAnnualReview	[13]	=True cat = Chest
ComplicationInLastPeriodOfNasalPolyps	PublicCysticFibrosisAnnualReview	[15]	=True cat = Chest
CILPOABP	PublicCysticFibrosisAnnualReview	[16]	=True cat = Chest
ComplicationInLastPeriodOfAsthma	PublicCysticFibrosisAnnualReview	[17]	=True cat = Chest
ComplicationInLastPeriodOfPneumothoraxRequiringAChestDrain	PublicCysticFibrosisAnnualReview	[18]	=True cat = Chest
ComplicationInLastPeriodOfChronicStaphylococcusAureus	PublicCysticFibrosisAnnualReview	[14]	=True cat = Chest
ComplicationInLastPeriodOfMassiveHaemoptysis	PublicCysticFibrosisAnnualReview	[19]	=True cat = Chest
ComplicationInLastPeriodOfElevatedRespiratoryRateAtRest	PublicCysticFibrosisAnnualReview	[11]	=True cat = Chest
ComplicationInLastPeriodOfRegularCoughingAtRest	PublicCysticFibrosisAnnualReview	[12]	=True cat = Chest
ComplicationInLastPeriodOfDistalIntestinalObstructionSyndrome	PublicCysticFibrosisAnnualReview	[20]	=True cat = Gut
ComplicationInLastPeriodOfHaematemesis	PublicCysticFibrosisAnnualReview	[21]	=True cat = Gut
CILPOGIR	PublicCysticFibrosisAnnualReview	[22]	=True cat = Gut
ComplicationInLastPeriodOfColonicStricture	PublicCysticFibrosisAnnualReview	[23]	=True cat = Gut
ComplicationInLastPeriodOfBariumEnemaLookingForColonopathy	PublicCysticFibrosisAnnualReview	[24]	=True cat = Gut
ComplicationInLastPeriodOfGallbladderDiseaseRequiringSurgery	PublicCysticFibrosisAnnualReview	[25]	=True cat = Gut
ComplicationInLastPeriodOfPancreatitis	PublicCysticFibrosisAnnualReview	[26]	=True cat = Gut
ComplicationInLastPeriodOfAbnormalLiverFunctionTests	PublicCysticFibrosisAnnualReview	[27]	=True cat = Varied
ComplicationInLastPeriodOfCirrhosisWithPortalHypertension	PublicCysticFibrosisAnnualReview	[28]	=True cat = Varied
CILPODRI	PublicCysticFibrosisAnnualReview	[29]	=True cat = Varied
ComplicationInLastPeriodOfArthropathy	PublicCysticFibrosisAnnualReview	[30]	=True cat = Varied
ComplicationInLastPeriodOfClubbing	PublicCysticFibrosisAnnualReview	[31]	=True cat = Varied
ComplicationInLastPeriodOfRaisedIgG	PublicCysticFibrosisAnnualReview	[32]	=True cat = Varied
ComplicationInLastPeriodOfHadIntravenousPortReplaced	PublicCysticFibrosisAnnualReview	[34]	=True cat = Varied
ComplicationInLastPeriodOfCancer	PublicCysticFibrosisAnnualReview	[33]	=True cat = Varied
ComplicationInLastPeriodOfOtherComplication	PublicCysticFibrosisAnnualReview	[35]	=True cat = Other

For Sex Split

SexAtBirth	PublicPatientBiography	[9/10/11]
------------	------------------------	-----------

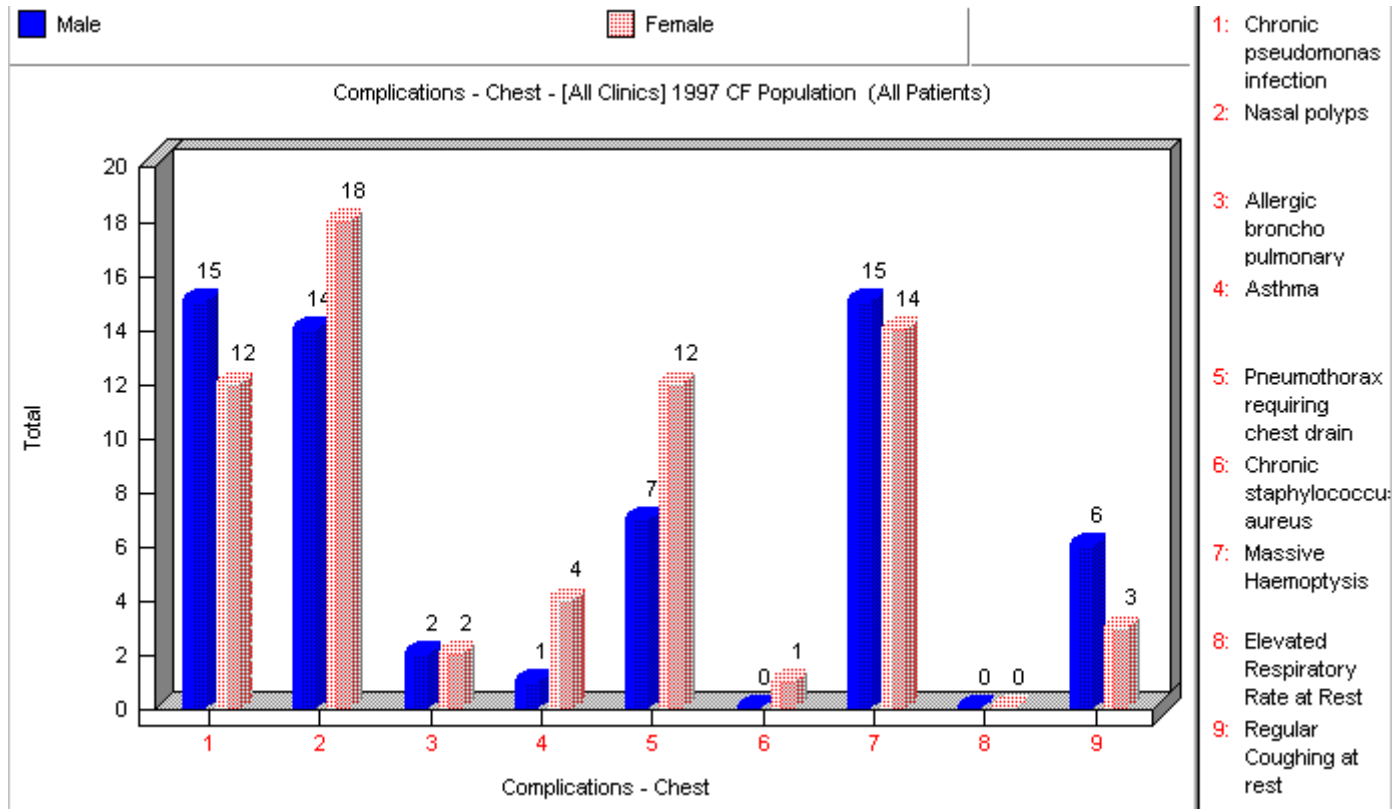
For Chronic Pseudomonas infection/ Chronic Staphylococcus infection/ Cepacia infection Splits

ComplicationInTheLastPeriodofChronic PseudomonasInfection	PublicCysticFibrosisAnnualReview	[13]	=True
ComplicationInTheLastPeriodofChronic StaphAureusInfection	PublicCysticFibrosisAnnualReview	[14]	=True
BacteriologyInLastPeriodFoundBurkhold eriaInSputumCulture	PublicCysticFibrosisAnnualReview	[75]	=True
BacteriologyInLastPeriodFoundBurkhold eriaInCoughSwab	PublicCysticFibrosisAnnualReview	[76]	=True

For Age Groups / Child vs Adult Splits

YearOfBirth	PublicPatientBiography	[8]
MonthOfBirth	PublicPatientBiography	[7]

Complications - Chest



Complications - Chest

This graph shows the details of chest complications. Patients are selected if they have attended for Annual Review in the year being analysed.

Splits are available for:

- Sex
- Chronic Pseudomonas infection – If Chronic Pseudomonas infection was checked as a ‘Complication in the last period’ on the Annual Review form
- Age Groups – in 5 year age bands (age as at 31st December in the year being analysed)
- Child vs Adult – Under 16s vs 16 years and over (age as at 31st December in the year being analysed)
- Chronic Staphylococcus infection – If Chronic Staphylococcus aureus infection was checked as a ‘Complication in the last period’ on the Annual Review form
- Cepacia infection – if Burkholderia (Cepaciae) was cultured in the last period in either sputum culture or cough swab

Data Specification

Data Fields Used

FieldName	Table	Field ID	Criteria
PatientIdentifier	PublicCysticFibrosisAnnualReview	[1]	-
ClinicCode	PublicCysticFibrosisAnnualReview	[2]	Parameter
YearOfVisit	PublicCysticFibrosisAnnualReview	[6]	Parameter
MonthOfVisit	PublicCysticFibrosisAnnualReview	[5]	Numeric
DayOfVisit	PublicCysticFibrosisAnnualReview	[4]	Numeric
ComplicationInLastPeriodOfChronicPseudomonasInfection	PublicCysticFibrosisAnnualReview	[13]	=True cat = Chest
ComplicationInLastPeriodOfNasal Polyps	PublicCysticFibrosisAnnualReview	[15]	=True cat = Chest

CILPOABP	PublicCysticFibrosisAnnualReview	[16]	=True cat = Chest
ComplicationInLastPeriodOfAsthma	PublicCysticFibrosisAnnualReview	[17]	=True cat = Chest
ComplicationInLastPeriodOfPneumothoraxRequiringAChestDrain	PublicCysticFibrosisAnnualReview	[18]	=True cat = Chest
ComplicationInLastPeriodOfChronicStaphylococcusAureus	PublicCysticFibrosisAnnualReview	[14]	=True cat = Chest
ComplicationInLastPeriodOfMassiveHaemoptysis	PublicCysticFibrosisAnnualReview	[19]	=True cat = Chest
ComplicationInLastPeriodOfElevatedRespiratoryRateAtRest	PublicCysticFibrosisAnnualReview	[11]	=True cat = Chest
ComplicationInLastPeriodOfRegularCoughingAtRest	PublicCysticFibrosisAnnualReview	[12]	=True cat = Chest

For Sex Split

SexAtBirth	PublicPatientBiography	[9/10/11]
------------	------------------------	-----------

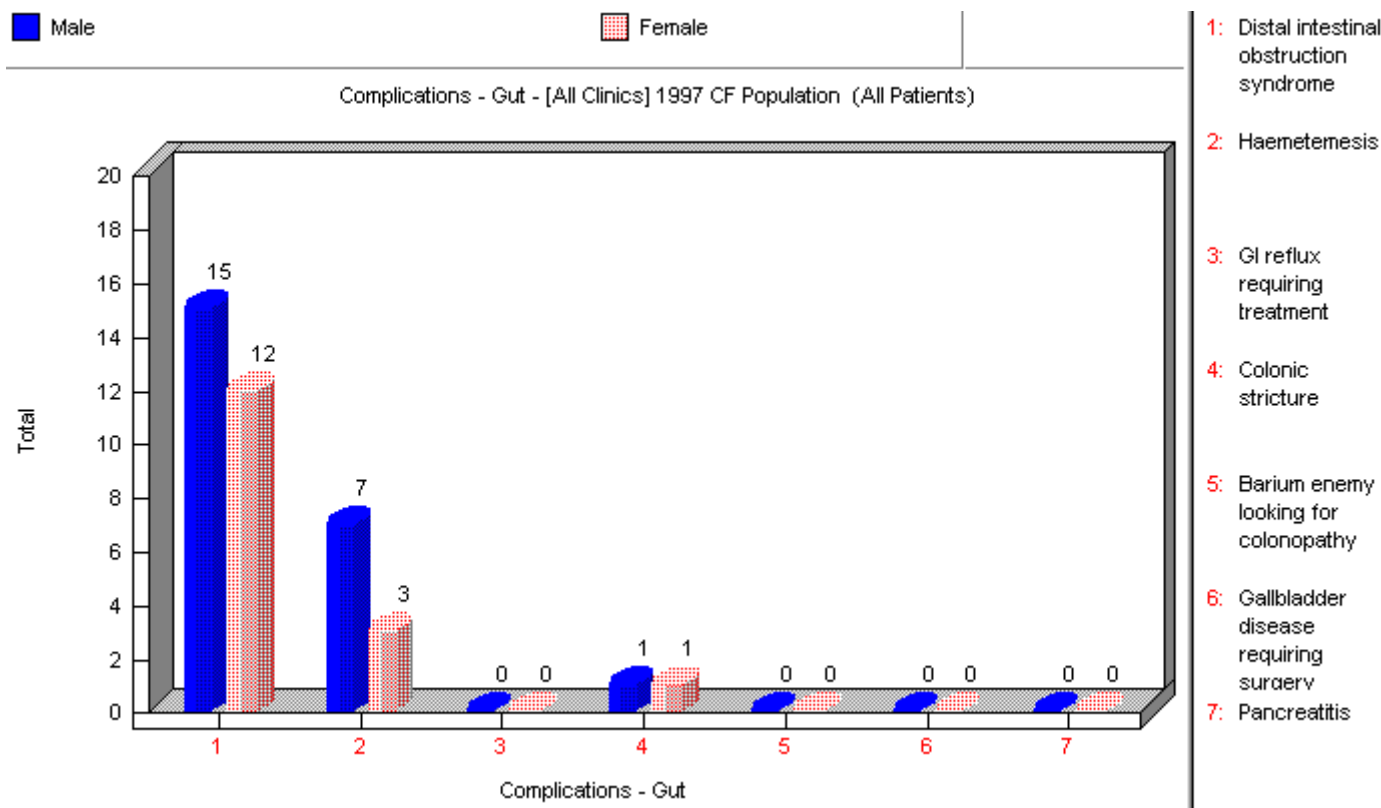
For Chronic Pseudomonas infection/ Chronic Staphylococcus infection/ Cepacia infection Splits

ComplicationInTheLastPeriodofChronicPseudomonasInfection	PublicCysticFibrosisAnnualReview	[13]	=True
ComplicationInTheLastPeriodofChronicStaphAureusInfection	PublicCysticFibrosisAnnualReview	[14]	=True
BacteriologyInLastPeriodFoundBurkholderiaInSputumCulture	PublicCysticFibrosisAnnualReview	[75]	=True
BacteriologyInLastPeriodFoundBurkholderiaInCoughSwab	PublicCysticFibrosisAnnualReview	[76]	=True

For Age Groups / Child vs Adult Splits

YearOfBirth	PublicPatientBiography	[8]
MonthOfBirth	PublicPatientBiography	[7]

Complications - Gut



Complications - Gut

This graph shows details of gut complications. Patients are selected if they have attended for Annual Review in the year being analysed.

Splits are available for:

- Sex
- Chronic Pseudomonas infection – If Chronic Pseudomonas infection was checked as a ‘Complication in the last period’ on the Annual Review form
- Age Groups – in 5 year age bands (age as at 31st December in the year being analysed)
- Child vs Adult – Under 16s vs 16 years and over (age as at 31st December in the year being analysed)
- Chronic Staphylococcus infection – If Chronic Staphylococcus aureus infection was checked as a ‘Complication in the last period’ on the Annual Review form
- Cepacia infection – if Burkholderia (Cepaciae) was cultured in the last period in either sputum culture or cough swab

Data Specification

Data Fields Used

FieldName	Table	Field ID	Criteria
PatientIdentifier	PublicCysticFibrosisAnnualReview	[1]	-
ClinicCode	PublicCysticFibrosisAnnualReview	[2]	Parameter
YearOfVisit	PublicCysticFibrosisAnnualReview	[6]	Parameter
MonthOfVisit	PublicCysticFibrosisAnnualReview	[5]	Numeric
DayOfVisit	PublicCysticFibrosisAnnualReview	[4]	Numeric
ComplicationInLastPeriodOfDistal IntestinalObstructionSyndrome	PublicCysticFibrosisAnnualReview	[20]	=True cat = Gut
ComplicationInLastPeriodOfHaem atemesis	PublicCysticFibrosisAnnualReview	[21]	=True cat = Gut

CILPOGIR	PublicCysticFibrosisAnnualReview	[22]	=True cat = Gut
ComplicationInLastPeriodOfColonicStricture	PublicCysticFibrosisAnnualReview	[23]	=True cat = Gut
ComplicationInLastPeriodOfBariumEnemaLookingForColonopathy	PublicCysticFibrosisAnnualReview	[24]	=True cat = Gut
ComplicationInLastPeriodOfGallbladderDiseaseRequiringSurgery	PublicCysticFibrosisAnnualReview	[25]	=True cat = Gut
ComplicationInLastPeriodOfPancreatitis	PublicCysticFibrosisAnnualReview	[26]	=True cat = Gut

For Sex Split

SexAtBirth	PublicPatientBiography	[9/10/11]
------------	------------------------	-----------

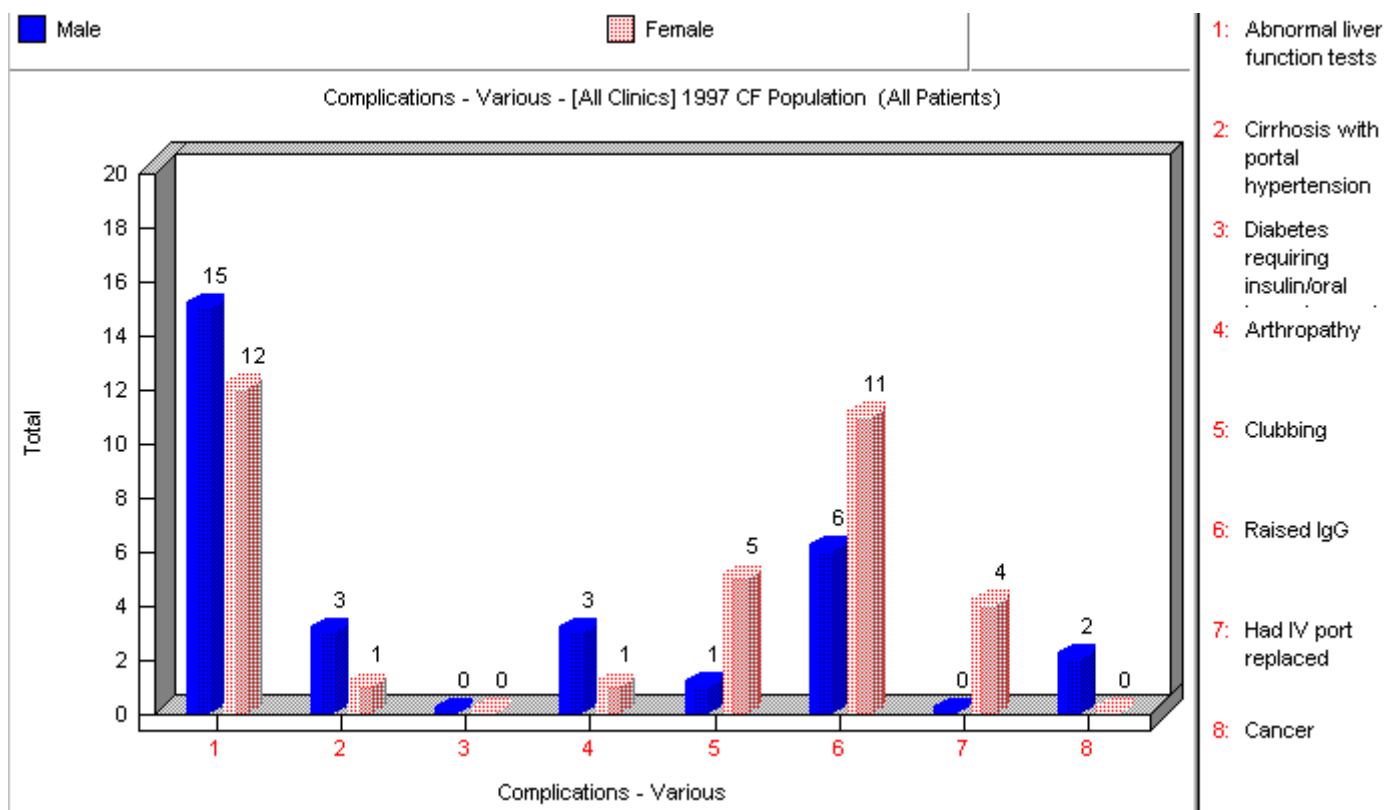
For Chronic Pseudomonas infection/ Chronic Staphylococcus infection/ Cepacia infection Splits

ComplicationInTheLastPeriodofChronicPseudomonasInfection	PublicCysticFibrosisAnnualReview	[13]	=True
ComplicationInTheLastPeriodofChronicStaphAureusInfection	PublicCysticFibrosisAnnualReview	[14]	=True
BacteriologyInLastPeriodFoundBurkholderiaInSputumCulture	PublicCysticFibrosisAnnualReview	[75]	=True
BacteriologyInLastPeriodFoundBurkholderiaInCoughSwab	PublicCysticFibrosisAnnualReview	[76]	=True

For Age Groups / Child vs Adult Splits

YearOfBirth	PublicPatientBiography	[8]
MonthOfBirth	PublicPatientBiography	[7]

Complications- Various



Complications - Various

This graph shows various complications other than those of chest and gut. Patients are selected if they have attended for Annual Review in the year being analysed.

Splits are available for:

- Sex
- Chronic Pseudomonas infection – If Chronic Pseudomonas infection was checked as a ‘Complication in the last period’ on the Annual Review form
- Age Groups – in 5 year age bands (age as at 31st December in the year being analysed)
- Child vs Adult – Under 16s vs 16 years and over (age as at 31st December in the year being analysed)
- Chronic Staphylococcus infection – If Chronic Staphylococcus aureus infection was checked as a ‘Complication in the last period’ on the Annual Review form
- Cepacia infection – if Burkholderia (Cepaciae) was cultured in the last period in either sputum culture or cough swab

Data Specification

Data Fields Used

FieldName	Table	Field ID	Criteria
PatientIdentifier	PublicCysticFibrosisAnnualReview	[1]	-
ClinicCode	PublicCysticFibrosisAnnualReview	[2]	Parameter
YearOfVisit	PublicCysticFibrosisAnnualReview	[6]	Parameter
MonthOfVisit	PublicCysticFibrosisAnnualReview	[5]	Numeric
DayOfVisit	PublicCysticFibrosisAnnualReview	[4]	Numeric
ComplicationInLastPeriodOfAbnormalLiverFunctionTests	PublicCysticFibrosisAnnualReview	[27]	=True cat = Varied
ComplicationInLastPeriodOfCirrhosisWithPortalHypertension	PublicCysticFibrosisAnnualReview	[28]	=True cat = Varied

CILPODRI	PublicCysticFibrosisAnnualReview	[29]	=True cat = Varied
ComplicationInLastPeriodOfArthropathy	PublicCysticFibrosisAnnualReview	[30]	=True cat = Varied
ComplicationInLastPeriodOfClubbing	PublicCysticFibrosisAnnualReview	[31]	=True cat = Varied
ComplicationInLastPeriodOfRaisedIgG	PublicCysticFibrosisAnnualReview	[32]	=True cat = Varied
ComplicationInLastPeriodOfHadIntravenousPortReplaced	PublicCysticFibrosisAnnualReview	[34]	=True cat = Varied
ComplicationInLastPeriodOfCancer	PublicCysticFibrosisAnnualReview	[33]	=True cat = Varied

For Sex Split

SexAtBirth	PublicPatientBiography	[9/10/11]
------------	------------------------	-----------

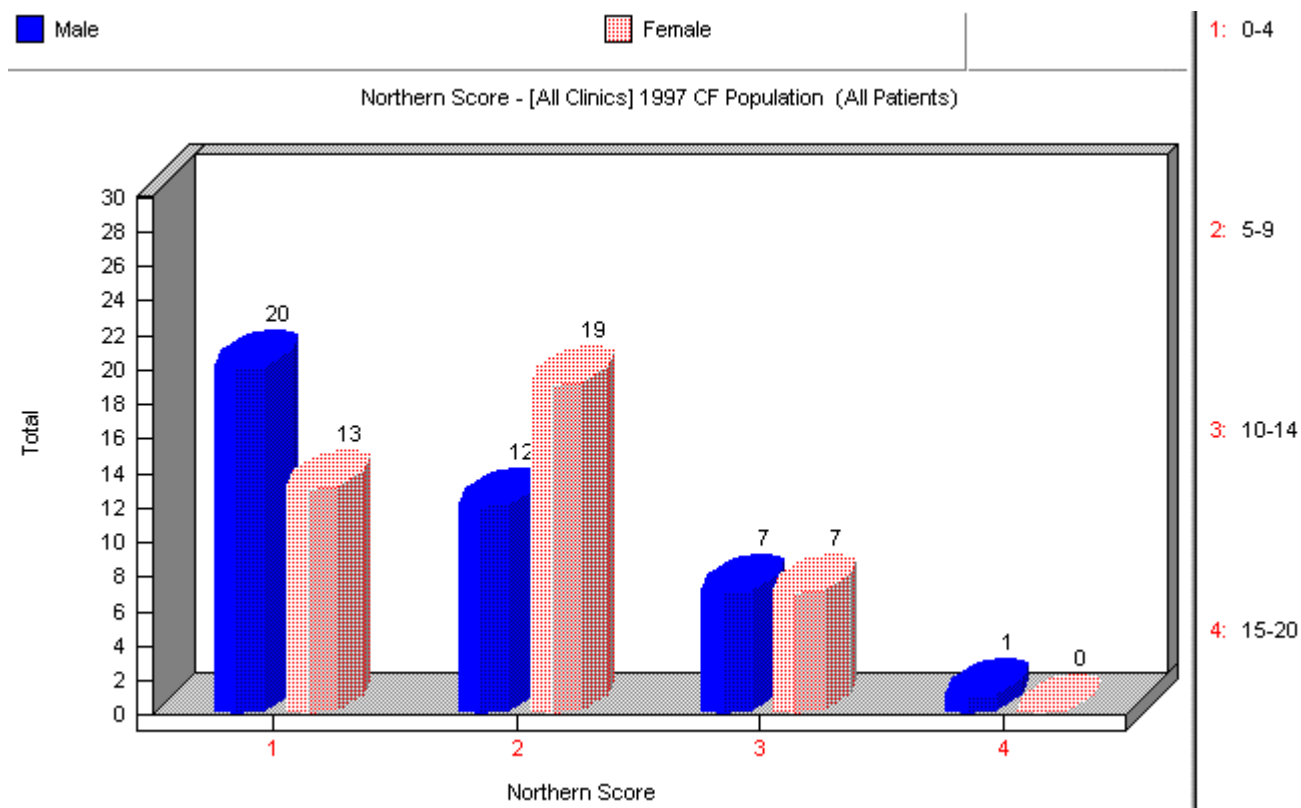
For Chronic Pseudomonas infection/ Chronic Staphylococcus infection/ Cepacia infection Splits

ComplicationInTheLastPeriodofChronicPseudomonasInfection	PublicCysticFibrosisAnnualReview	[13]	=True
ComplicationInTheLastPeriodofChronicStaphAureusInfection	PublicCysticFibrosisAnnualReview	[14]	=True
BacteriologyInLastPeriodFoundBurkholderiaInSputumCulture	PublicCysticFibrosisAnnualReview	[75]	=True
BacteriologyInLastPeriodFoundBurkholderiaInCoughSwab	PublicCysticFibrosisAnnualReview	[76]	=True

For Age Groups / Child vs Adult Splits

YearOfBirth	PublicPatientBiography	[8]
MonthOfBirth	PublicPatientBiography	[7]

Northern Score



Northern Score

This graph shows the Northern Score categories for the CF population. It excludes any scores recorded as 'x' (not done) or '?' (unknown) Patients are selected if they have attended for Annual Review in the year being analysed.

Splits are available for:

- Sex
- Chronic Pseudomonas infection – If Chronic Pseudomonas infection was checked as a 'Complication in the last period' on the Annual Review form
- Age Groups – in 5 year age bands (age as at 31st December in the year being analysed)
- Child vs Adult – Under 16s vs 16 years and over (age as at 31st December in the year being analysed)
- Chronic Staphylococcus infection – If Chronic Staphylococcus aureus infection was checked as a 'Complication in the last period' on the Annual Review form
- Cepacia infection – if Burkholderia (Cepaciae) was cultured in the last period in either sputum culture or cough swab

Data Specification

Data Fields Used

FieldName	Table	Field ID	Criteria
PatientIdentifier	PublicCysticFibrosisAnnualReview	[1]	-
ClinicCode	PublicCysticFibrosisAnnualReview	[2]	Parameter
YearOfVisit	PublicCysticFibrosisAnnualReview	[6]	Parameter
MonthOfVisit	PublicCysticFibrosisAnnualReview	[5]	Numeric
DayOfVisit	PublicCysticFibrosisAnnualReview	[4]	Numeric
MostRecentNorthernScoreInLastPeriod	PublicCysticFibrosisAnnualReview	[134]	<>"x",Numeric

For Sex Split

SexAtBirth	PublicPatientBiography	[9/10/11]
------------	------------------------	-----------

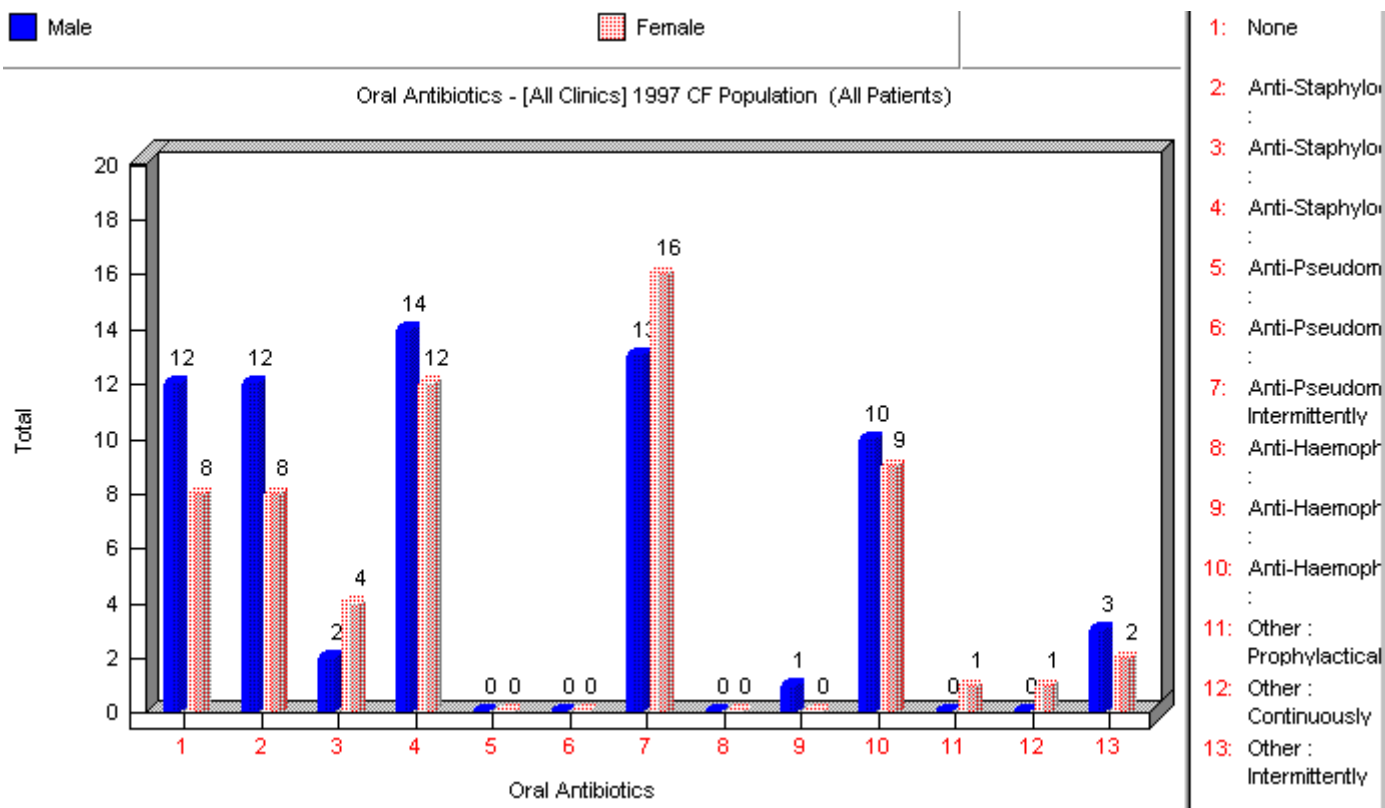
For Chronic Pseudomonas infection/ Chronic Staphylococcus infection/ Cepacia infection Splits

ComplicationInTheLastPeriodofChronicPseudomonasInfection	PublicCysticFibrosisAnnualReview	[13]	=True
ComplicationInTheLastPeriodofChronicStaphAureusInfection	PublicCysticFibrosisAnnualReview	[14]	=True
BacteriologyInLastPeriodFoundBurkholderiaInSputumCulture	PublicCysticFibrosisAnnualReview	[75]	=True
BacteriologyInLastPeriodFoundBurkholderiaInCoughSwab	PublicCysticFibrosisAnnualReview	[76]	=True

For Age Groups / Child vs Adult Splits

YearOfBirth	PublicPatientBiography	[8]
MonthOfBirth	PublicPatientBiography	[7]

Oral Antibiotics



Oral Antibiotics

This graph shows the graphs for the oral antibiotics that patients are on. Patients are selected if they have attended for Annual Review in the year being analysed.

Splits are available for:

- Sex
- Chronic Pseudomonas infection – If Chronic Pseudomonas infection was checked as a ‘Complication in the last period’ on the Annual Review form
- Age Groups – in 5 year age bands (age as at 31st December in the year being analysed)
- Child vs Adult – Under 16s vs 16 years and over (age as at 31st December in the year being analysed)
- Chronic Staphylococcus infection – If Chronic Staphylococcus aureus infection was checked as a ‘Complication in the last period’ on the Annual Review form
- Cepacia infection – if Burkholderia (Cepaciae) was cultured in the last period in either sputum culture or cough swab

To view a list of items entered in ‘Other’, right click the mouse on the ‘Other’ bar. The list displayed may be copied to the clipboard if required.

Data Specification

Data Fields Used

FieldName	Table	Field ID	Criteria
PatientIdentifier	PublicCysticFibrosisAnnualReview	[1]	-
ClinicCode	PublicCysticFibrosisAnnualReview	[2]	Parameter
YearOfVisit	PublicCysticFibrosisAnnualReview	[6]	Parameter
MonthOfVisit	PublicCysticFibrosisAnnualReview	[5]	Numeric
DayOfVisit	PublicCysticFibrosisAnnualReview	[4]	Numeric
ReceivedNoOralAntibioticsInLastP	PublicCysticFibrosisAnnualReview	[43]	=True

eriod			
ROASAPIL	PublicCysticFibrosisAnnualReview	[44]	=True
ReceivedOralAntiStaphylococcusAntibioticContinuouslyInLastPeriod	PublicCysticFibrosisAnnualReview	[45]	=True
ROASAIL	PublicCysticFibrosisAnnualReview	[46]	=True
ROAPAPIL	PublicCysticFibrosisAnnualReview	[47]	=True
ReceivedOralAntiPseudomonasAntibioticContinuouslyInLastPeriod	PublicCysticFibrosisAnnualReview	[48]	=True
ReceivedOralAntiPseudomonasAntibioticIntermittentlyInLastPeriod	PublicCysticFibrosisAnnualReview	[49]	=True
ROAHAPIL	PublicCysticFibrosisAnnualReview	[50]	=True
ReceivedOralAntiHaemophilusAntibioticContinuouslyInLastPeriod	PublicCysticFibrosisAnnualReview	[51]	=True
ReceivedOralAntiHaemophilusAntibioticIntermittentlyInLastPeriod	PublicCysticFibrosisAnnualReview	[52]	=True
ReceivedOtherOralAntibioticProphylacticallyInLastPeriod	PublicCysticFibrosisAnnualReview	[53]	=True
ReceivedOtherOralAntibioticContinuouslyInLastPeriod	PublicCysticFibrosisAnnualReview	[54]	=True
ReceivedOtherOralAntibioticIntermittentlyInLastPeriod	PublicCysticFibrosisAnnualReview	[55]	=True

For Sex Split

SexAtBirth	PublicPatientBiography	[9/10/11]
------------	------------------------	-----------

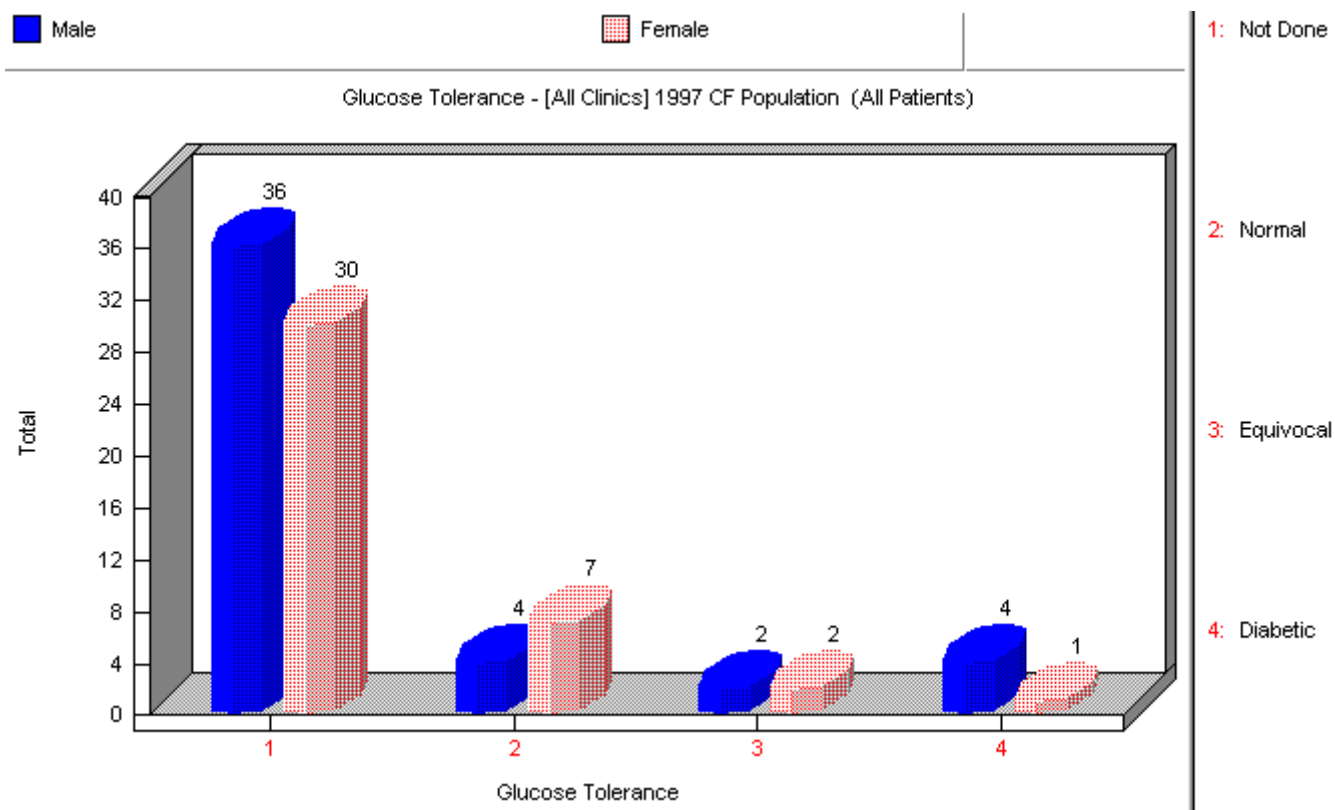
For Chronic Pseudomonas infection/ Chronic Staphylococcus infection/ Cepacia infection Splits

ComplicationInTheLastPeriodofChronicPseudomonasInfection	PublicCysticFibrosisAnnualReview	[13]	=True
ComplicationInTheLastPeriodofChronicStaphAureusInfection	PublicCysticFibrosisAnnualReview	[14]	=True
BacteriologyInLastPeriodFoundBurkholderiaInSputumCulture	PublicCysticFibrosisAnnualReview	[75]	=True
BacteriologyInLastPeriodFoundBurkholderiaInCoughSwab	PublicCysticFibrosisAnnualReview	[76]	=True

For Age Groups / Child vs Adult Splits

YearOfBirth	PublicPatientBiography	[8]
MonthOfBirth	PublicPatientBiography	[7]

Glucose Tolerance



Glucose Tolerance

This graph shows the categories patients fall into for glucose tolerance. Patients are selected if they have attended for Annual Review in the year being analysed..

Splits are available for:

- Sex
- Chronic Pseudomonas infection – If Chronic Pseudomonas infection was checked as a ‘Complication in the last period’ on the Annual Review form
- Age Groups – in 5 year age bands (age as at 31st December in the year being analysed)
- Child vs Adult – Under 16s vs 16 years and over (age as at 31st December in the year being analysed)
- Chronic Staphylococcus infection – If Chronic Staphylococcus aureus infection was checked as a ‘Complication in the last period’ on the Annual Review form
- Cepacia infection – if Burkholderia (Cepaciae) was cultured in the last period in either sputum culture or cough swab

Data Specification

Data Fields Used

FieldName	Table	Field ID	Criteria
PatientIdentifier	PublicCysticFibrosisAnnualReview	[1]	-
ClinicCode	PublicCysticFibrosisAnnualReview	[2]	Parameter
YearOfVisit	PublicCysticFibrosisAnnualReview	[6]	Parameter
MonthOfVisit	PublicCysticFibrosisAnnualReview	[5]	Numeric
DayOfVisit	PublicCysticFibrosisAnnualReview	[4]	Numeric
ResultsOfGlucoseToleranceTestIn LastPeriod	PublicCysticFibrosisAnnualReview	[111/ 112/ 113/ 114]	{"Not Done", "Normal", "Equivocal", "Diabetic"}

For Sex Split

SexAtBirth	PublicPatientBiography	[9/10/11]
------------	------------------------	-----------

For Chronic Pseudomonas infection/ Chronic Staphylococcus infection/ Cepacia infection Splits

ComplicationInTheLastPeriodofChronicPseudomonasInfection	PublicCysticFibrosisAnnualReview	[13]	=True
ComplicationInTheLastPeriodofChronicStaphAureusInfection	PublicCysticFibrosisAnnualReview	[14]	=True
BacteriologyInLastPeriodFoundBurkholderiaInSputumCulture	PublicCysticFibrosisAnnualReview	[75]	=True
BacteriologyInLastPeriodFoundBurkholderiaInCoughSwab	PublicCysticFibrosisAnnualReview	[76]	=True

For Age Groups / Child vs Adult Splits

YearOfBirth	PublicPatientBiography	[8]
MonthOfBirth	PublicPatientBiography	[7]